




# YouTestMe GetCertified

## Knowledge Examination Platform





Take your online tests to the next level with  
new features YouTestMe GetCertified has  
released for you!

## Testing Locations



Administer your virtual test wherever you wish by creating a Testing location and assigning a time zone and proctors to it. Combine your Testing location with Testing sessions feature to create tests for different user groups at different places.

Create complete and unique tests easily

## Testing Sessions



Make your test available for users at various locations (classrooms, buildings, states, continents) at different times using the Testing sessions module. Assign proctors that will have permissions to monitor, pause, prohibit, allow, or suspend test attempts using a proctor dashboard.

# Create complete and unique tests easily

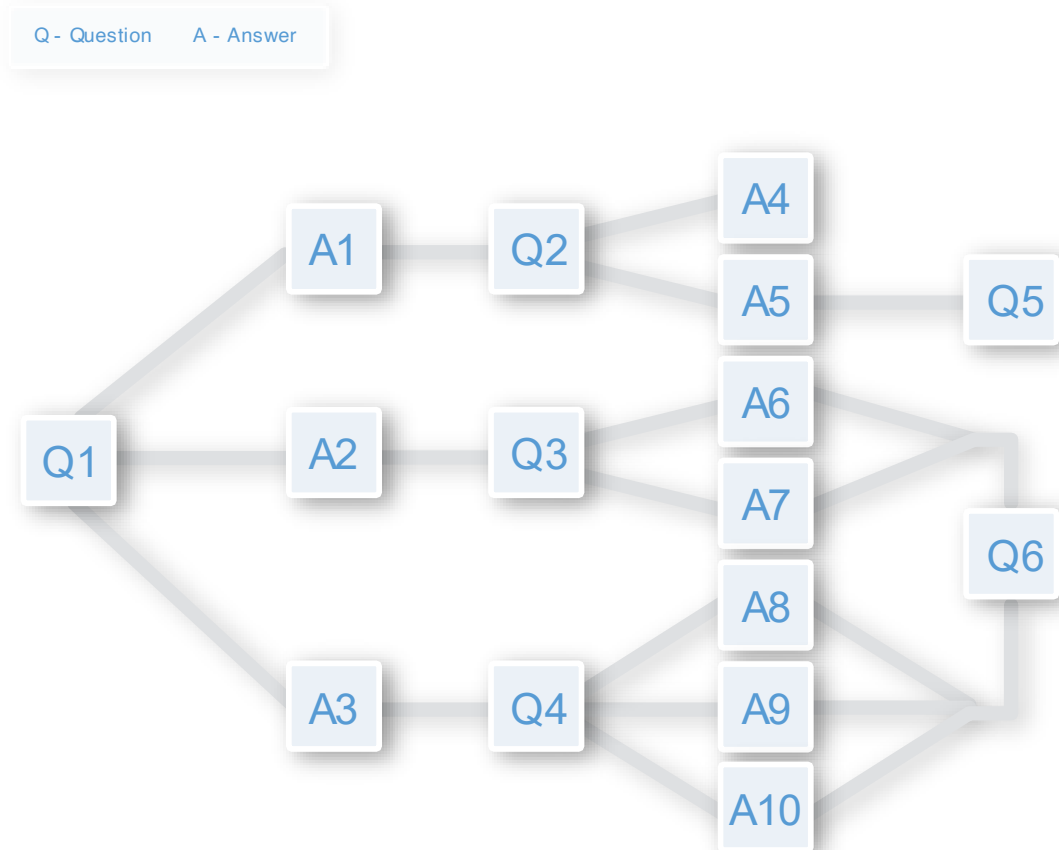
## Testing Sections

Create tests within tests using our Test section module. Each Test section can have a unique set of questions and configuration (duration, pass mark, etc.). Create critical sections (that require passing), demographic sections, examine the results on each section separately or compare section results with each other.



## Branching questions

Chain the questions together using the branching option. Define a specific set of branching questions that will follow the original question and tailor the test-taking and grading process based on the answers that users provide.



## Matrix

A matrix question type is a group of multiple-choice questions displayed in a grid of rows and columns. The rows present the questions to the respondents, and the columns offer a set of predefined answer choices that apply to each question in the row.

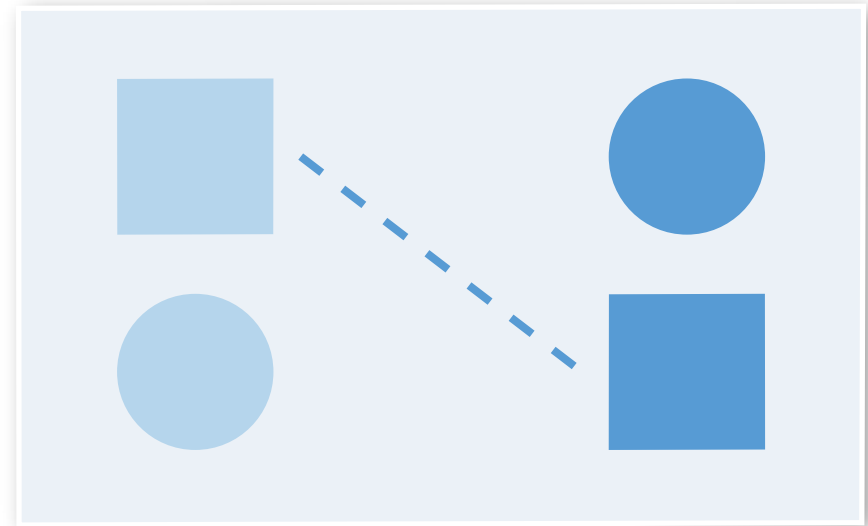
How would you evaluate your mood in the morning?

|              | 1                                | 2                     | 3                     | 4                                | 5                                |
|--------------|----------------------------------|-----------------------|-----------------------|----------------------------------|----------------------------------|
| Exited       | <input type="radio"/>            | <input type="radio"/> | <input type="radio"/> | <input checked="" type="radio"/> | <input type="radio"/>            |
| Enthusiastic | <input type="radio"/>            | <input type="radio"/> | <input type="radio"/> | <input type="radio"/>            | <input checked="" type="radio"/> |
| Upset        | <input checked="" type="radio"/> | <input type="radio"/> | <input type="radio"/> | <input type="radio"/>            | <input type="radio"/>            |

## Matching questions

Relate items in column A with items in Column B by:

- ➔ Drag and drop action
- ➔ Choosing the appropriate number or matching letter
- ➔ Typing in the corresponding match
- ➔ Dragging a line to it





## Question groups

Question groups can hold shared media and text for questions.

## Answer feedback

Answer feedback option allows providing feedback to the candidates as soon as they answer the question.

## Monitoring



Controlling test dynamics is now possible with the YouTestMe GetCertified Monitoring feature. This feature gives the authority to specific users in the system (test managers or proctors) to have a detailed preview of candidates' test progress and results.

## Browser lockdown



Browser lockdown feature prevents candidates from cutting, saving, or printing anything from the screen.

# Secure your online exams with our cheating preventions mechanisms



## Automated proctoring (on-demand proctoring)

The system automatically monitors the test-attempt using 8 behavioral trackers and records the entire process, marking the moments of suspicious behaviors. Once the exam is finished, the system generates a credibility report and stores the exam footage for the optional subsequent human validation and review.

## Live proctoring



A certified proctor supervises the exam in real-time, watching the test-taker's surroundings and desktop to rule out cheating personally. The video of the test with highlighted times of suspicious behavior and an automatically generated report are available after a test-attempt if further review is needed.



# New and advanced reporting and grading options



## Report builder

The efficient examination of test results on various layers is an important step in the test-taking process, now provided by our Report builder. As a test manager, you will be able to analyze the reports on users, questions, question pools, test sections, or test as a whole. Our

Report Builder enables you to compare the elements to each other or examine them individually, use advanced filtering and sorting options, and export the reports that you created.

## Scheduled reports



Predefined reports can now be exported to Excel files and sent to subscribers' emails at a specified time and interval.

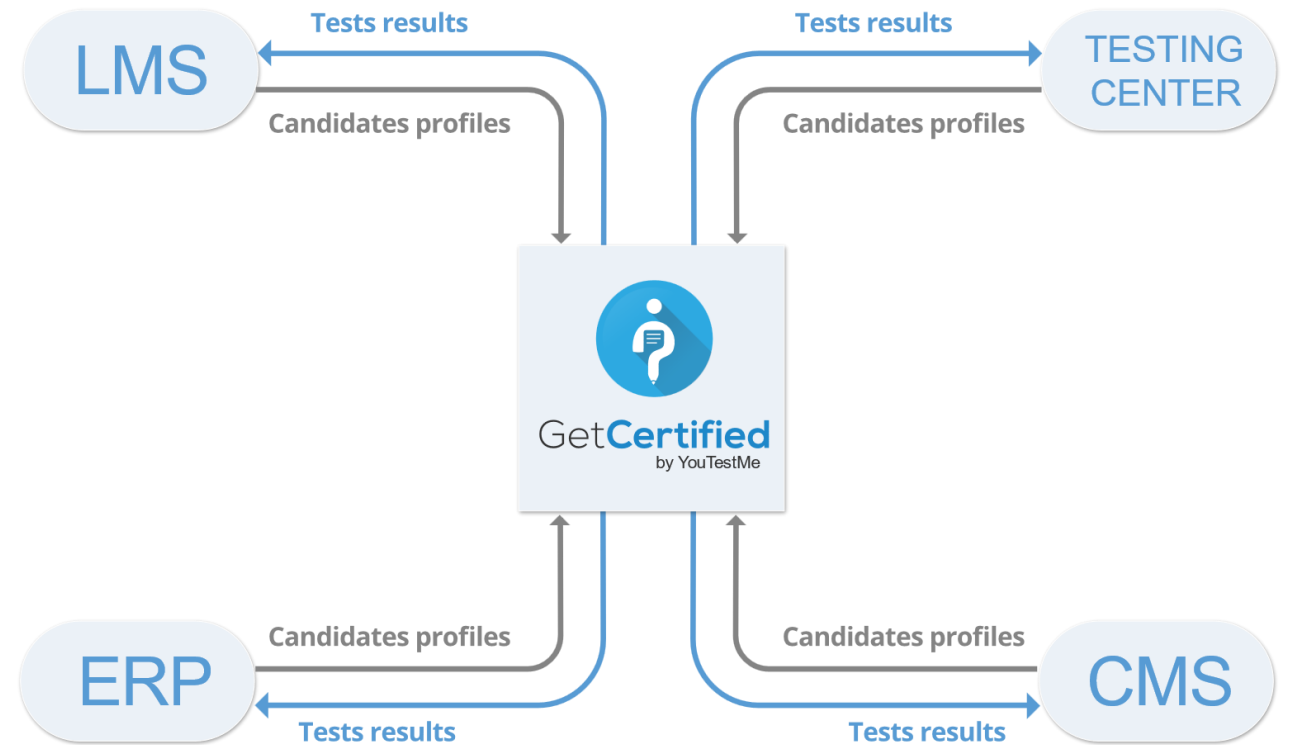
## Grading scale

|   |         |   |        |
|---|---------|---|--------|
| A | 90-100% | D | 60-69% |
| B | 80-89%  | F | 0-59%  |
| C | 70-79%  |   |        |

Predefined reports can now be exported to Excel files and sent to subscribers' emails at a specified time and interval.

## Integration with other platforms

GetCertified examination engine is easily integrated with other LMS and able to accommodate different business models.



## Single sign-on

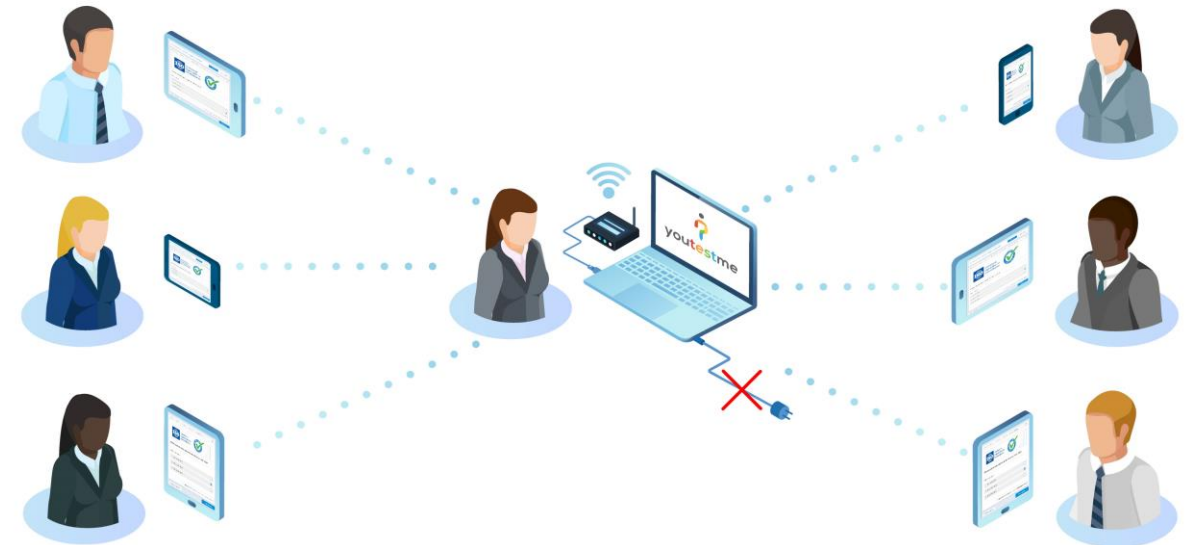


Single sign-on (SSO) is an authentication capability that lets users access multiple applications with one set of sign-in credentials. Enterprises typically use SSO to provide more straightforward access to a variety of web, on-premises, and cloud apps for better user experience.



## Off-the-grid testing

- ➔ No need for internet connection, wired LAN, or power
- ➔ The entire system can be battery operated using laptops and tablets
- ➔ Data synchronization using network connection or file exchange



## SCORM and xAPI



YouTestMe is a SCORM (Shareable Content Object Reference Model) and xAPI compliant software, which means you can efficiently share content with other platforms that support these technologies. SCORM is the absolute standard in e-learning, and xAPI is an upgraded version of Tin Can that provides more advanced data about user progress and performance.

## Custom theme and branding

Customize YouTestMe GetCertified by:

- ➔ Setting up you company logo
- ➔ Adjusting the application colors according to your corporate standards
- ➔ Choosing a custom domain name (available on Cloud hosting)

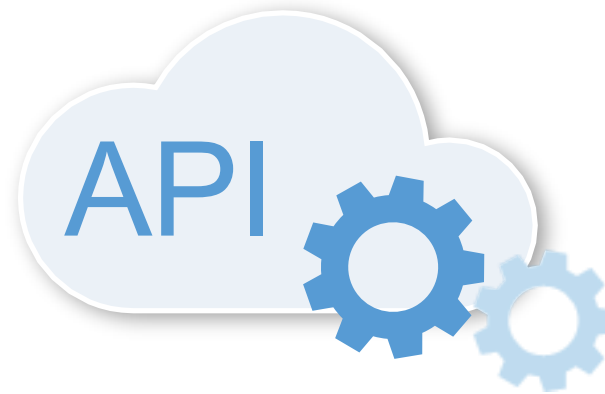


## Sell your tests online (e-commerce)



YouTestMe GetCertified is a complete solution for creating, selling, and delivering online knowledge tests, surveys, and training courses. Our software has a user-friendly interface, and it's easy for your customers to browse, preview, and purchase content. YouTestMe GetCertified supports payments with credit and debit cards.

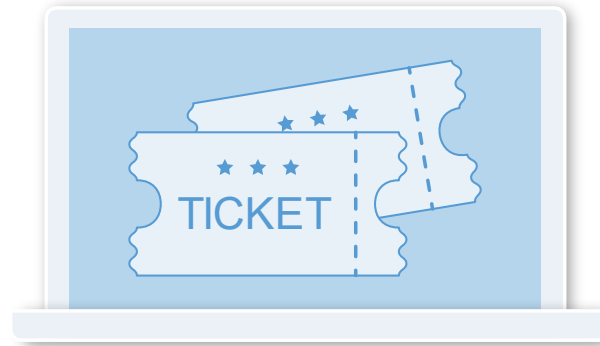
# API



With our API, you can easily integrate your systems with YouTestMe GetCertified. You can programmatically access a wide range of functions and data from the YouTestMe database.



## Issue tracking system



Our integrated issue tracking system based on Bugzilla software allows efficient, organized, and systematic collecting of issues. Support tickets can be opened from within YouTestMe GetCertified application.

More user-friendly features that will help you and your candidates

## Responsive UI/UX design



More user-friendly features that will help you and your candidates

## Notifications



Email and application notifications can now be configured and customized within the application.

More user-friendly features that will help you and your candidates

## Personal information and custom user properties



When initiating the test, the user can confirm the validity of his/her personal information or make the necessary changes to start the test.

Also, you can add as many custom user properties as you need to any user profile.

## Flag for review



Flagging the questions allows the candidates to mark the questions they want to return to later. Also, the application flags the non-answered questions to inform the candidates they should answer them before submitting/completing the exam.



## Show question metadata



Question metadata, including points, penalty, difficulty and question pool name, can now be displayed to the candidates during the test-taking process.

## New pricing options



**For small businesses  
starting from  
260\$ per month**



**Special offer for large  
organizations  
up to 40% discount  
on Enterprise Edition**



# INTERESTED TO FIND OUT MORE

Contact us by e-mail at [info@youtestme.com](mailto:info@youtestme.com)

[www.youtestme.com](http://www.youtestme.com)