



YouTestMe

Open or Closed Captioning

Table of Contents

- 1 Introduction..... 2
- 2 Linked video captions 2

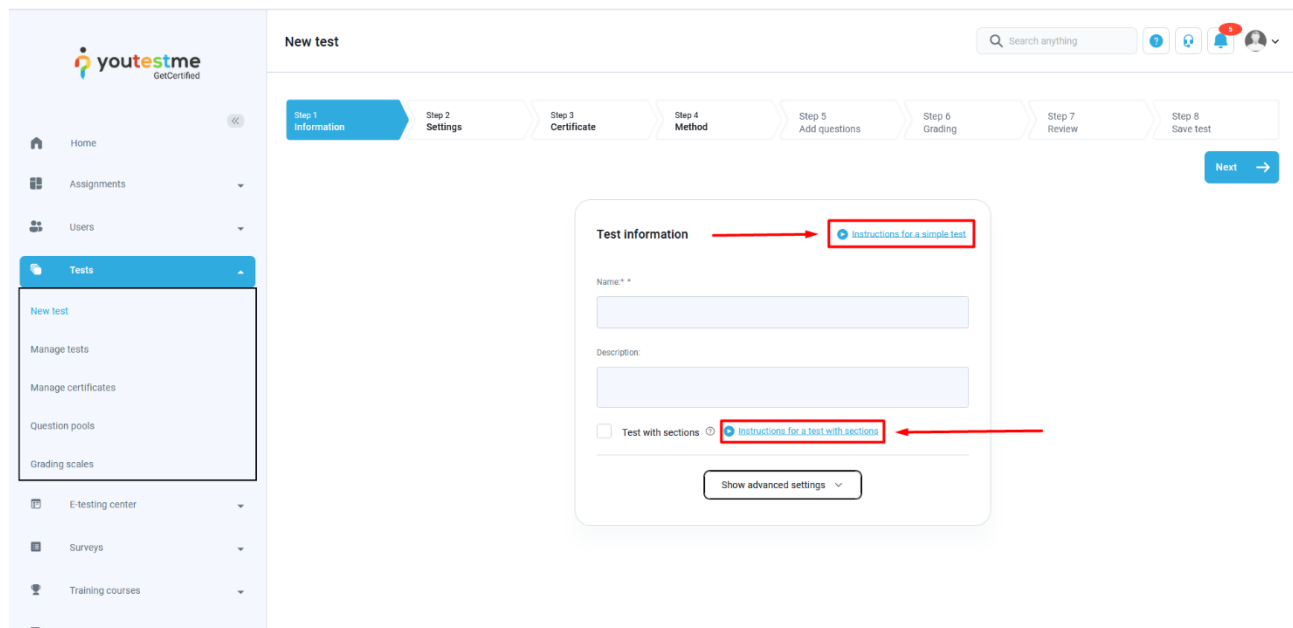
1 Introduction

This document's purpose is to demonstrate that all linked videos in the application have open or closed captions, i.e., transcriptions of the audio part of a video.

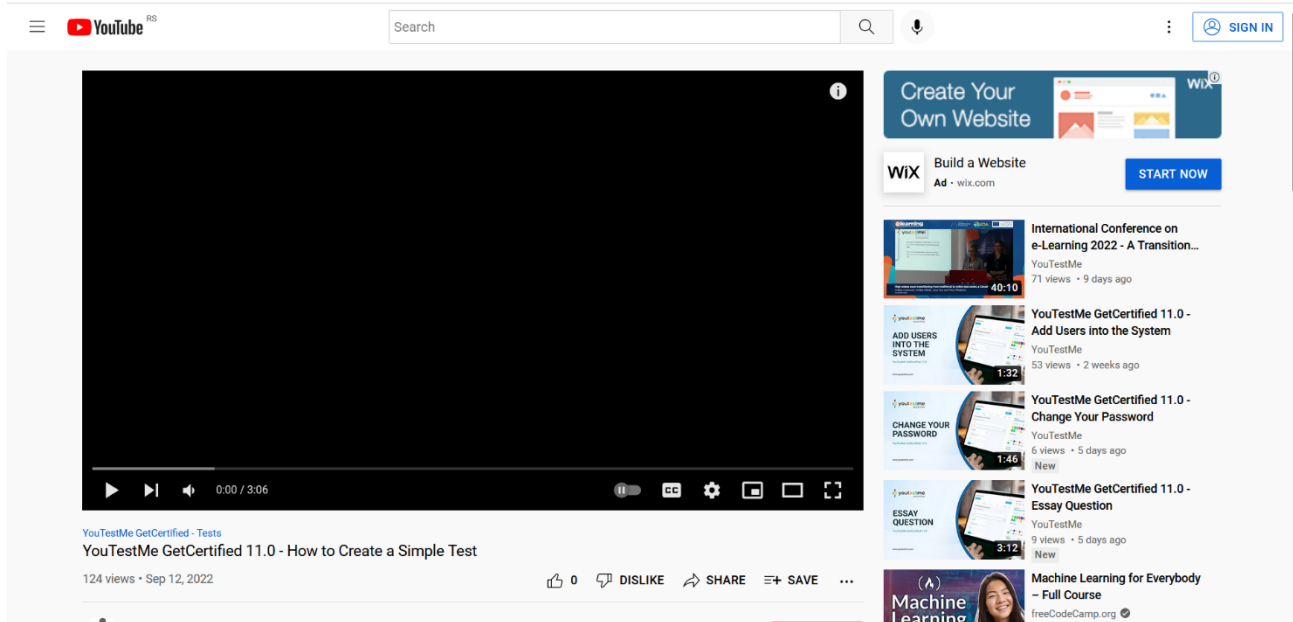
2 Linked video captions

Certain sections of the application contain links to videos with instructions, explanations, or introductions to certain features.

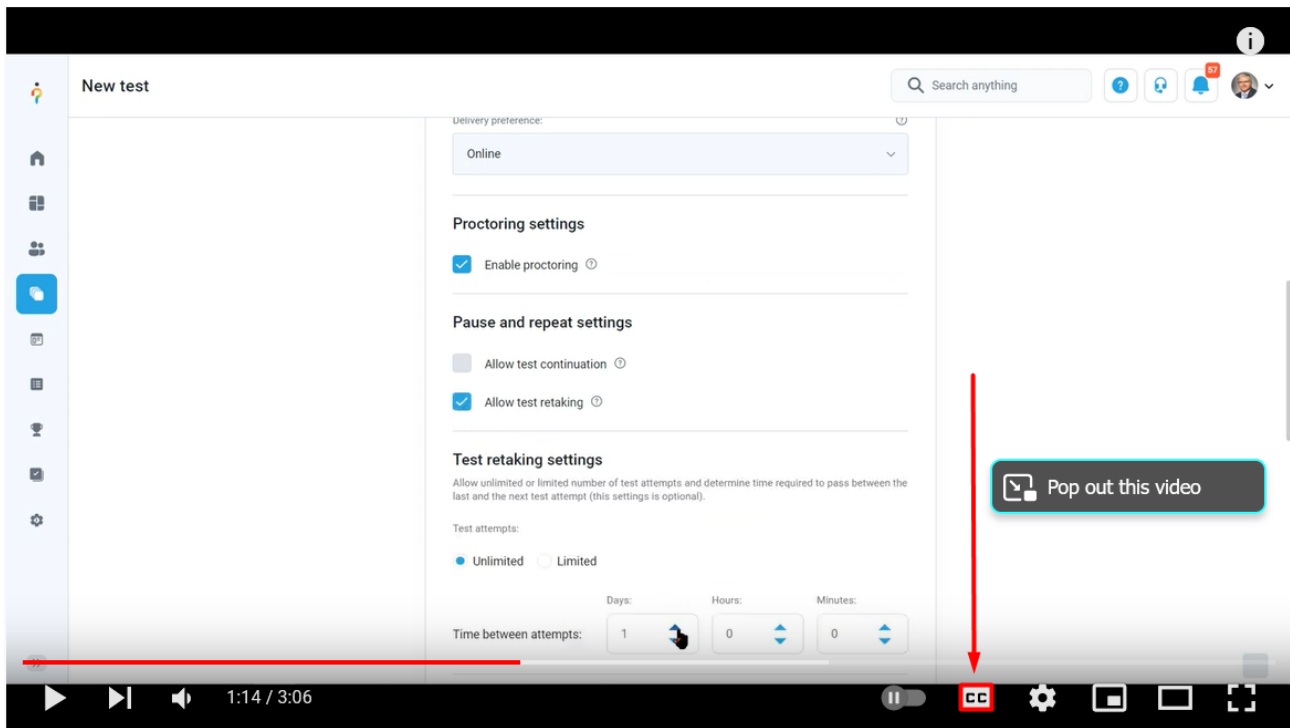
You can find several links in the New test section in the following example.



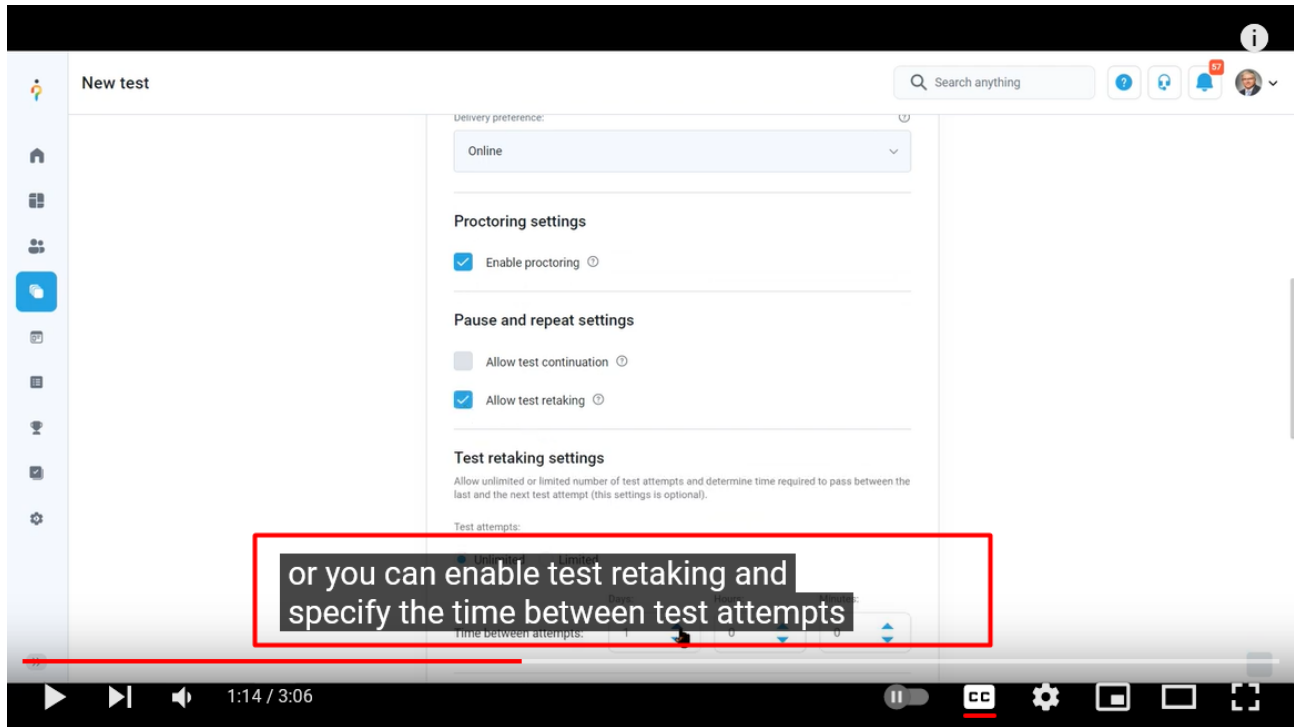
By selecting one of these links, you are redirected to a video on YouTestMe's YouTube channel, in this example, the one titled "How to Create a Simple Test".



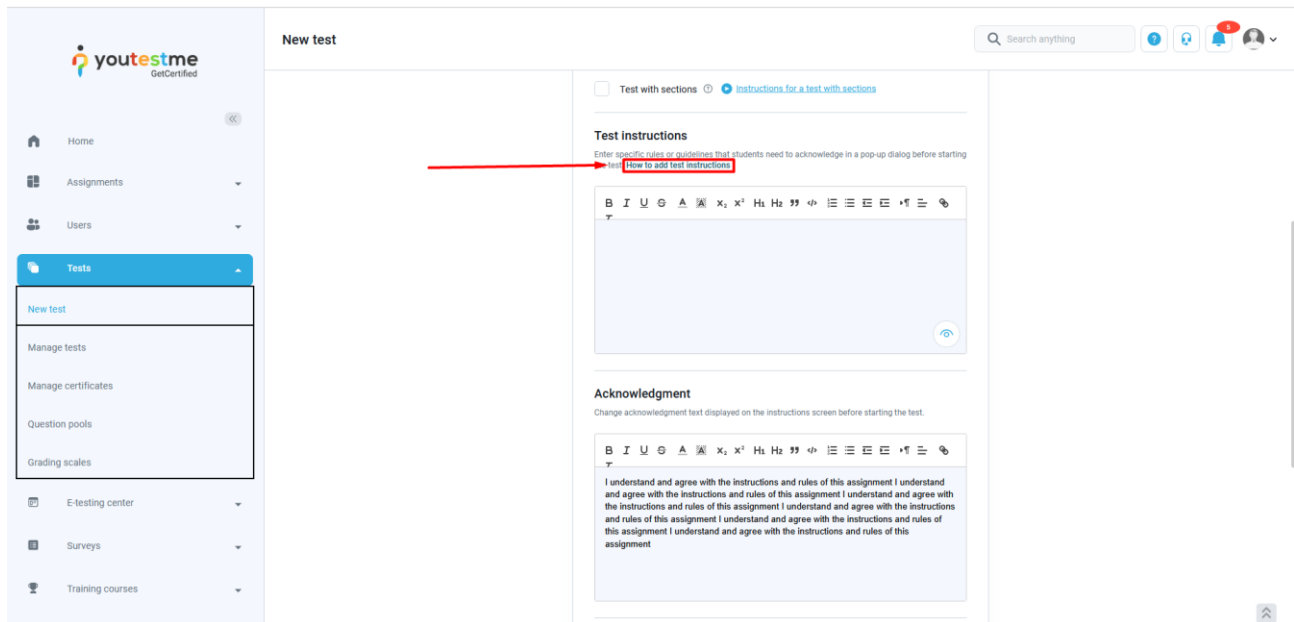
This video, as well as all others on the channel, includes a transcript. To enable the transcript, click on the following icon on the YouTube screen:



The transcript will appear at the bottom of the screen.



It is important to note only the links that are colored blue, such as the one mentioned above, lead to videos. The gray-colored links lead to articles:



How to add the test instructions

This article explains how a test manager can add instructions to the test that candidates need to acknowledge before starting the test.

Adding test instructions

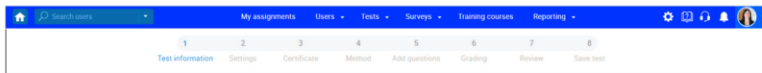
[To top ↑](#)

Test instructions are added during the test creation.

To create a test, hover over the "Tests" in the main menu, and select the "New test" (for a video tutorial on how to create a test, please watch this [video](#)).

The Test Creation Wizard will open, where you should:

1. Write the instruction in the field.
2. Or load previously created instructions by selecting the saved instruction from the drop-down list. All the instructions written for the published test will appear in this list.
3. Preview the instructions – click the eye icon to see the instructions from the candidate's perspective.



Knowledge Base

Best practices and use cases

- General
- Integrations
- New release - 11.0
- Questions
- Reporting
- Surveys
- System
- Test-taking
- Tests

New release

- How to create a simple test without sections
- How to set up "Did not show up" status
- How to create and add questions to a test
- How to create a test with sections
- How to create a test with a demographic section
- How to use test generator for different versions of the test
- How to import a test from an Excel file
- How to configure test retake attempts

