



YouTestMe

Branching questions

File name	Branching questions
Author	YouTestMe
Confidentiality	Internal or Public
Last save date	Monday, October-31-2022 at 12:49:00 PM

Table of Contents

1	Introduction.....	2
2	Adding Questions to a Question pool	3
3	Single Choice Branching	4
4	Multiple Choice Branching	9
5	True/false branching	13

1 Introduction

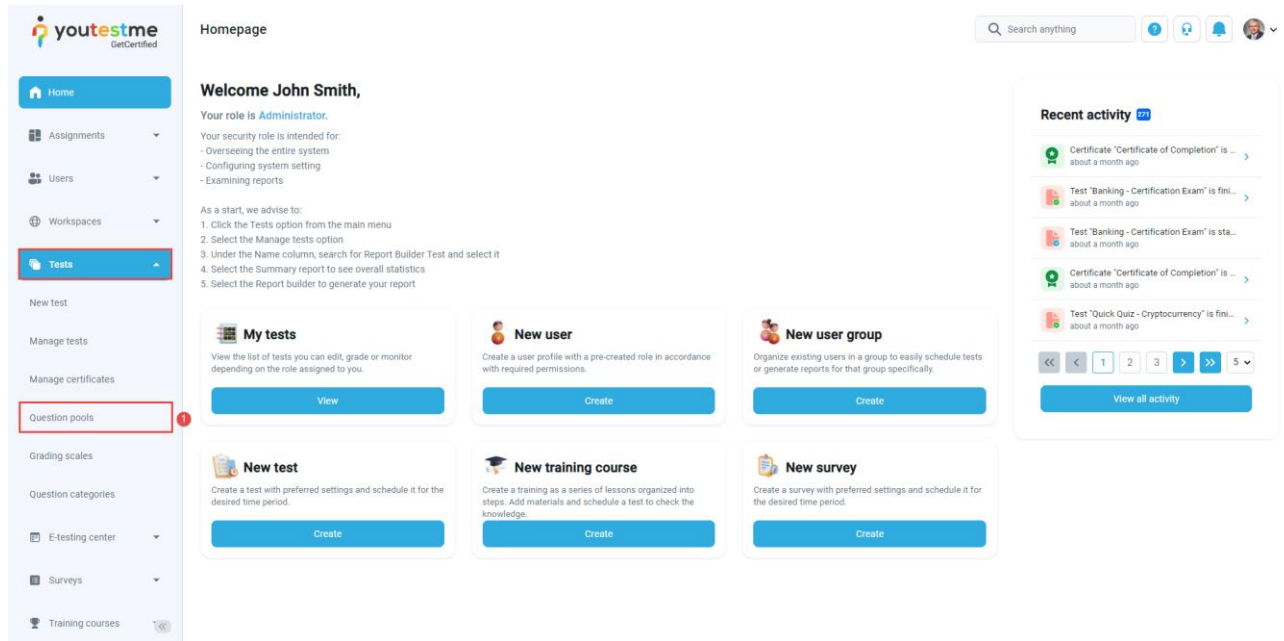
This document's purpose is to explain how to create branching questions. The branching option allows you to define the next question for each original question. You can use branching in three types of questions:

1. Single choice (all scoring methods).
2. Multiple choice ("by the combination of answers").
3. True/False (all scoring methods).

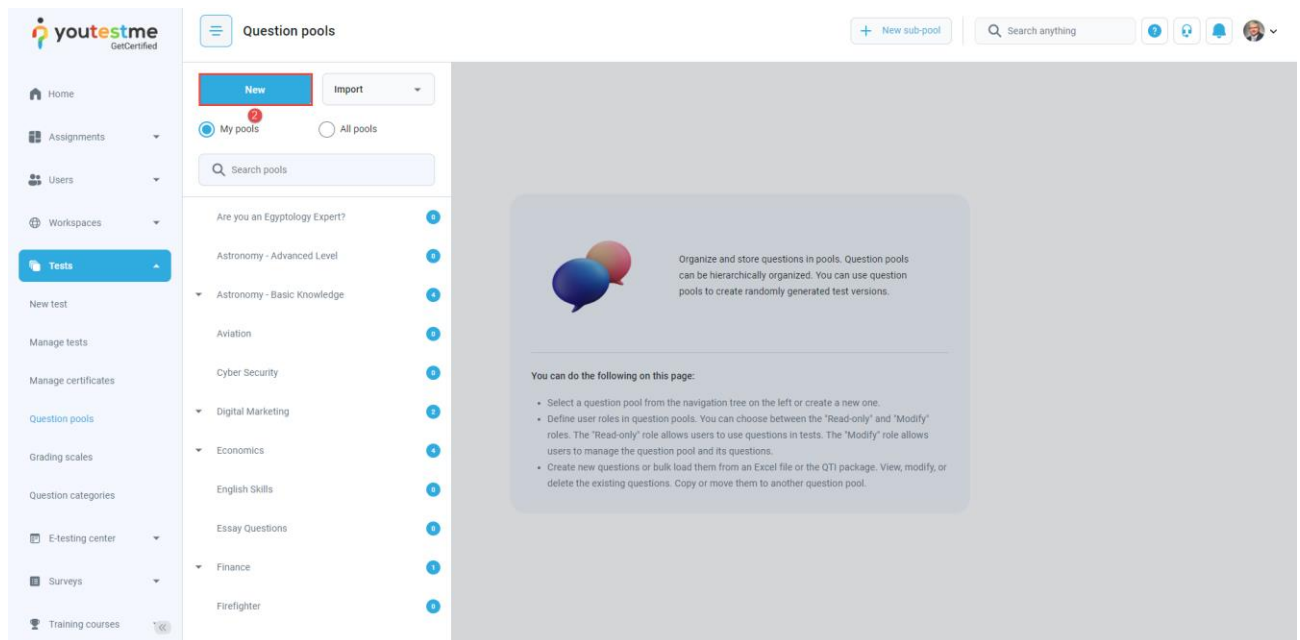
Please note that the branching is not available for the mentioned question types if you add assistance to the question.

2 Adding Questions to a Question pool

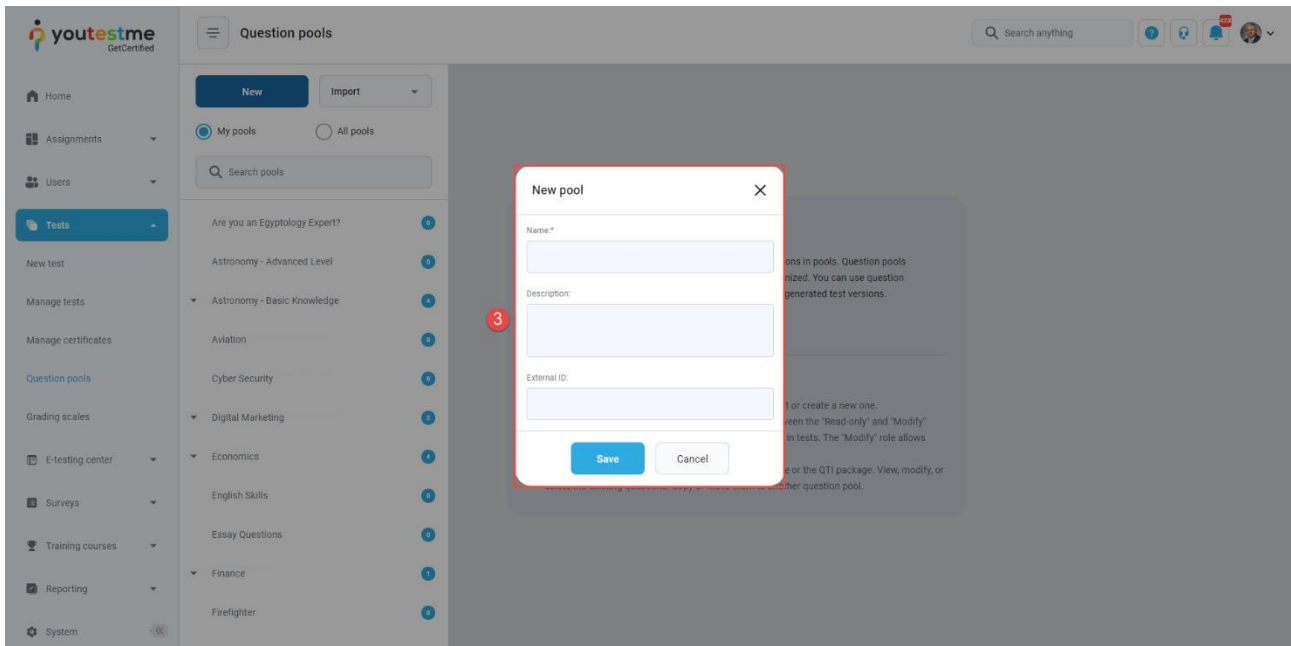
1. To add questions into a question pool, navigate to **Tests/Question pools**.



2. To add questions into a new question pool, click the **New** button.

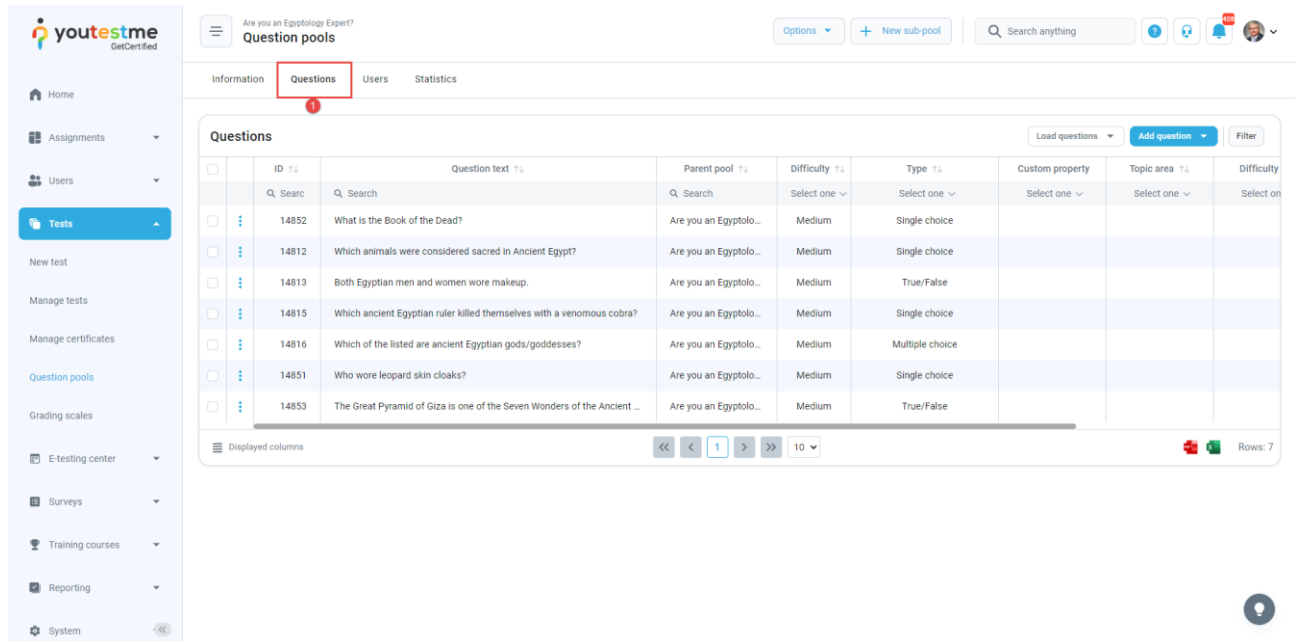


3. Add a pool name, optionally description and external ID, and save it in the pop-up window.

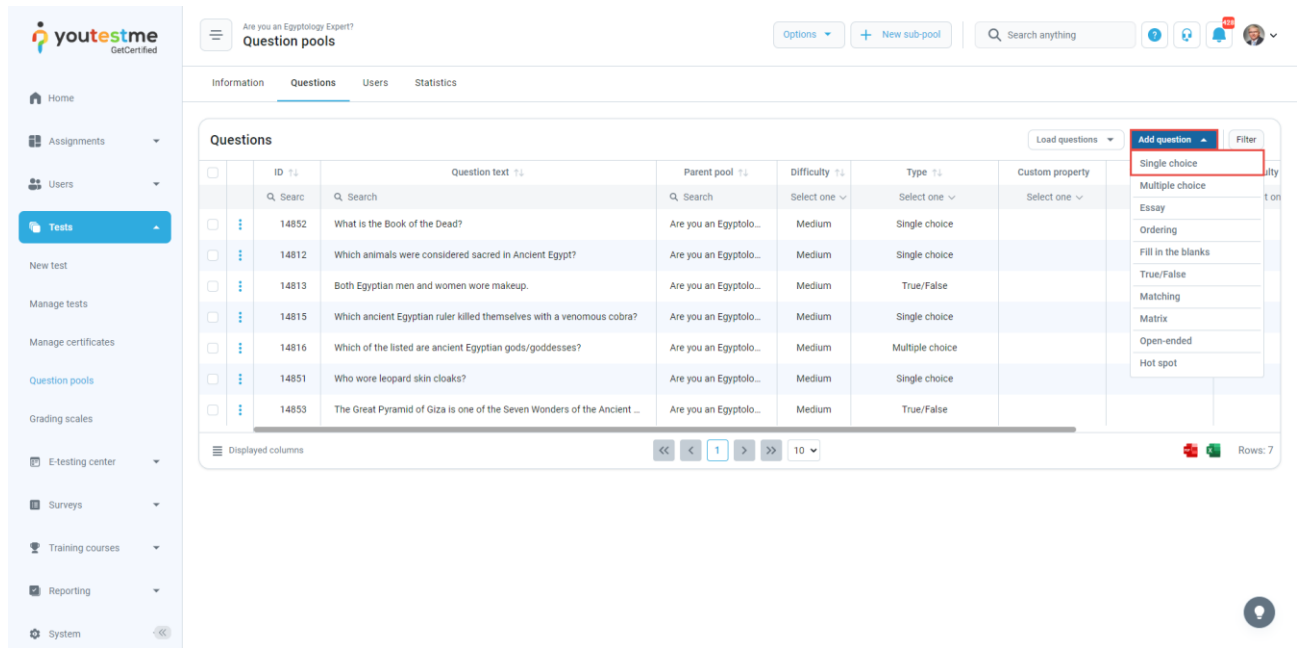


3 Single Choice Branching

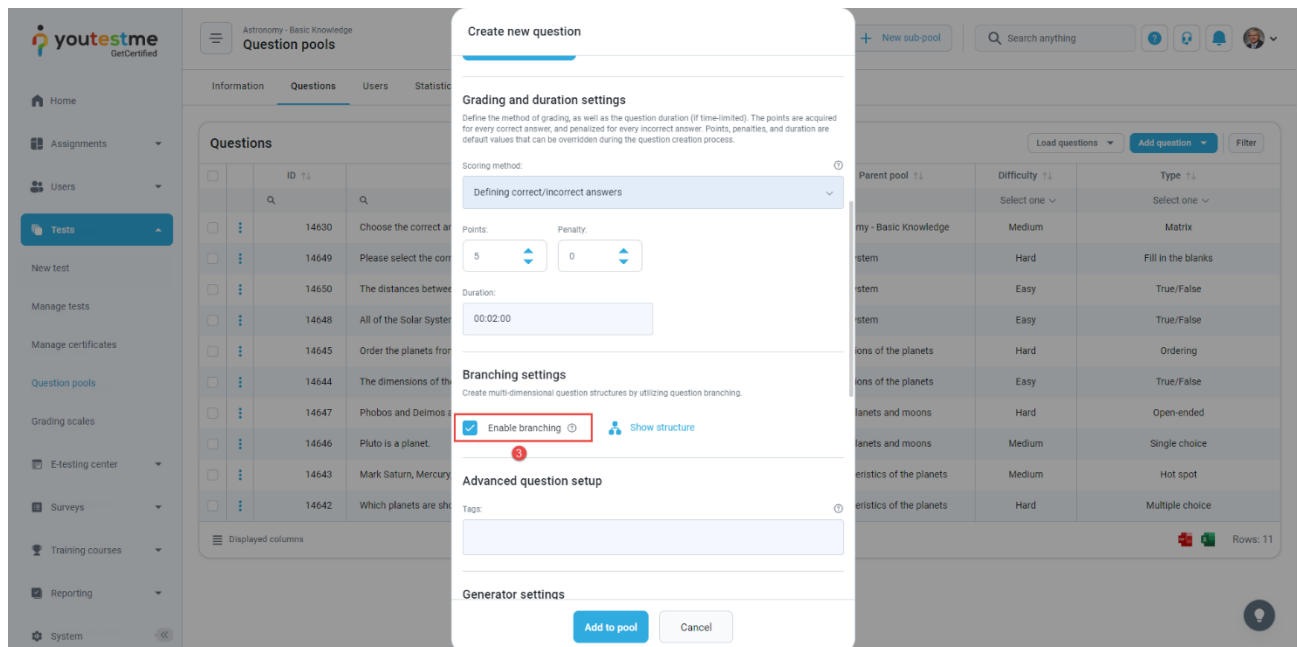
1. To add a single choice question to a newly created or an existing question pool, select the **Questions** tab.



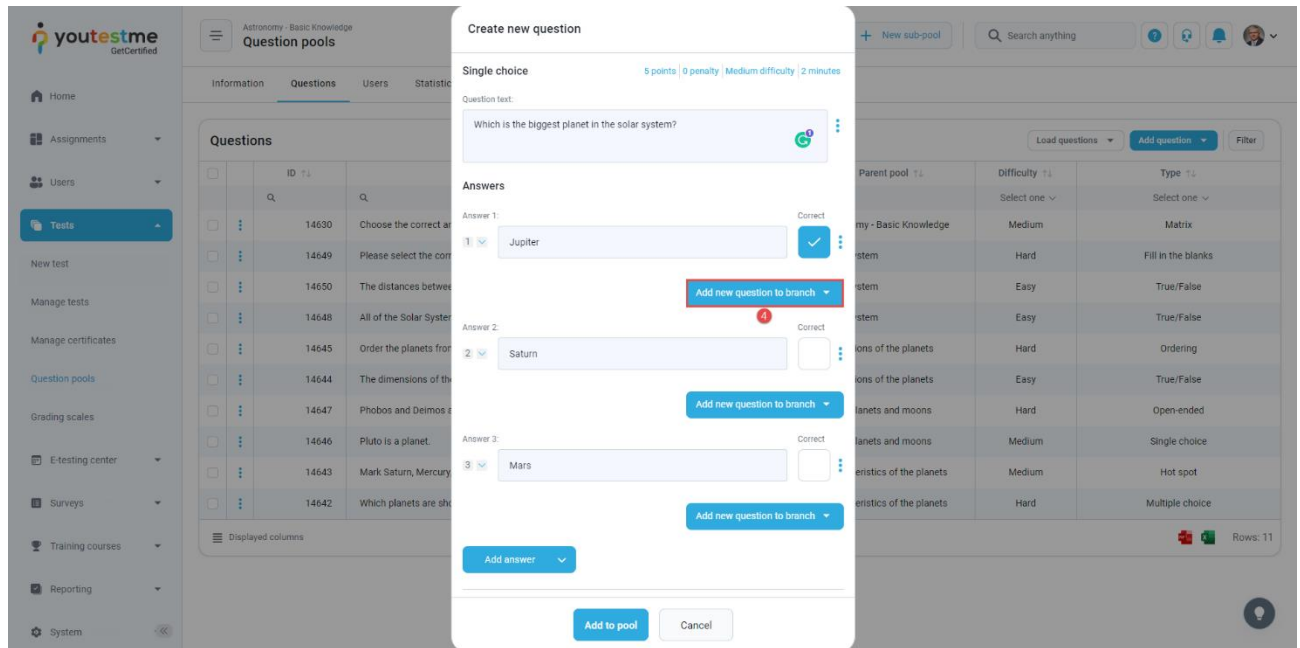
- Click on the **Add question** button and select the **Single choice** option.



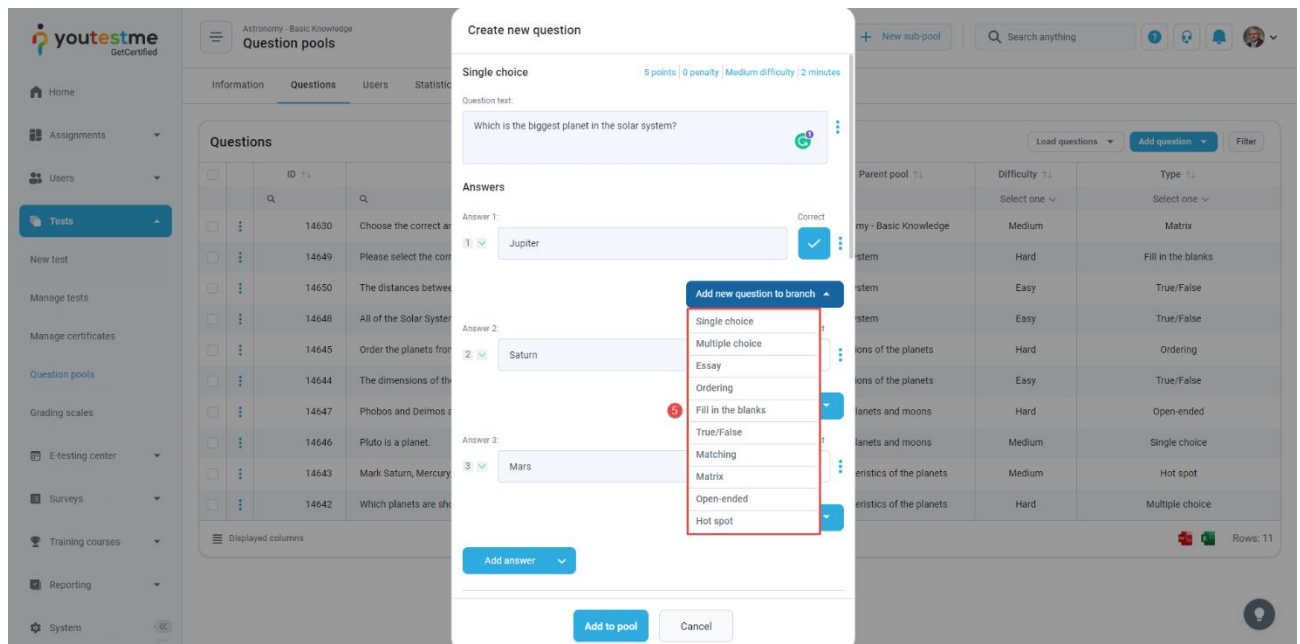
- Configure the question settings (difficulty, duration, scoring method, points, penalty, frequency), and check the box that enables the **Branching** option.



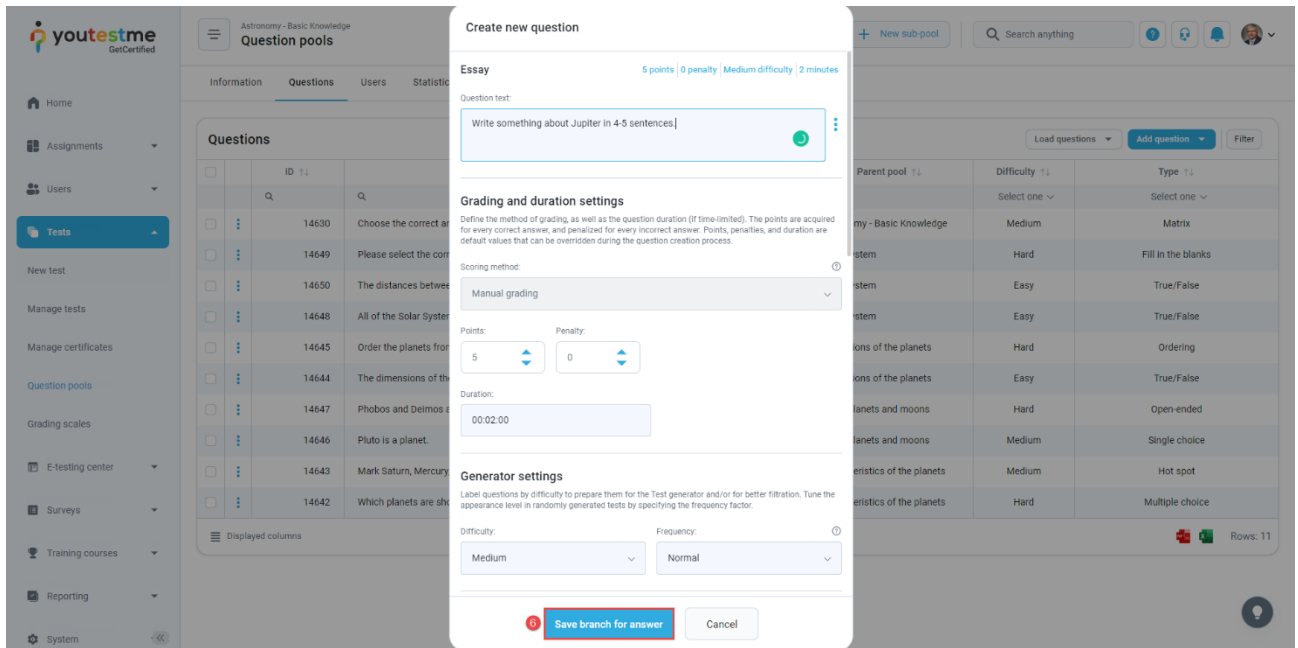
4. To add a question to a branch, click the **Add question to branch**.



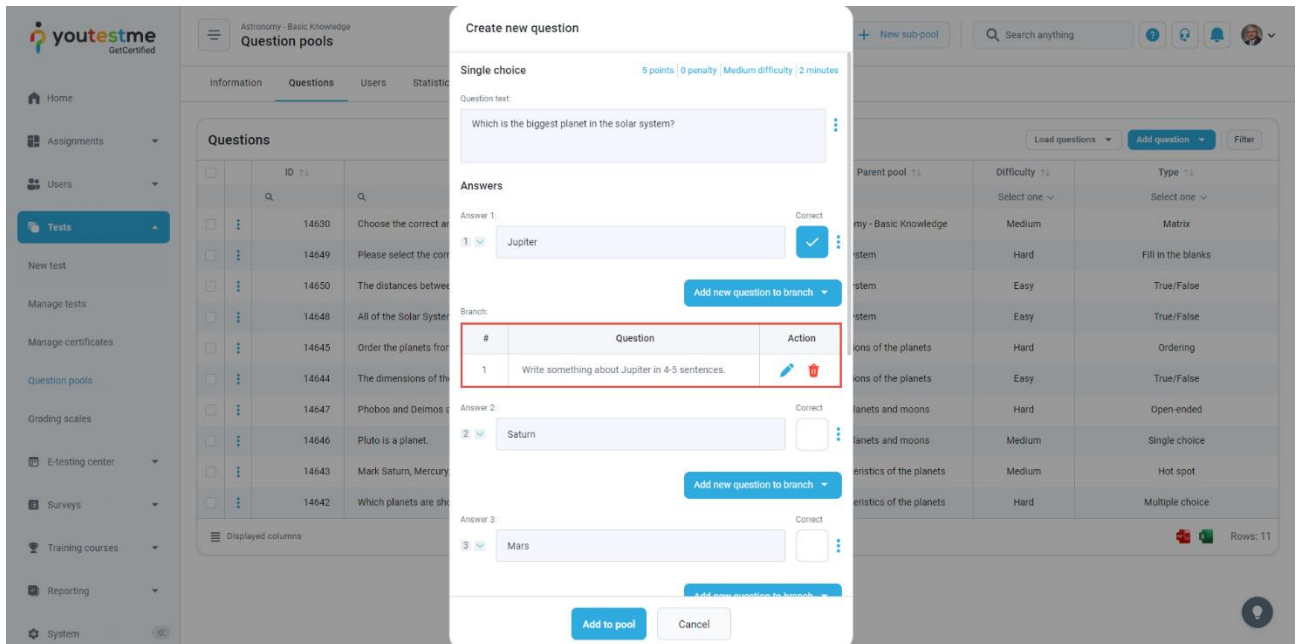
5. Select the question type from the drop-down menu (you can add all question types as a next question).



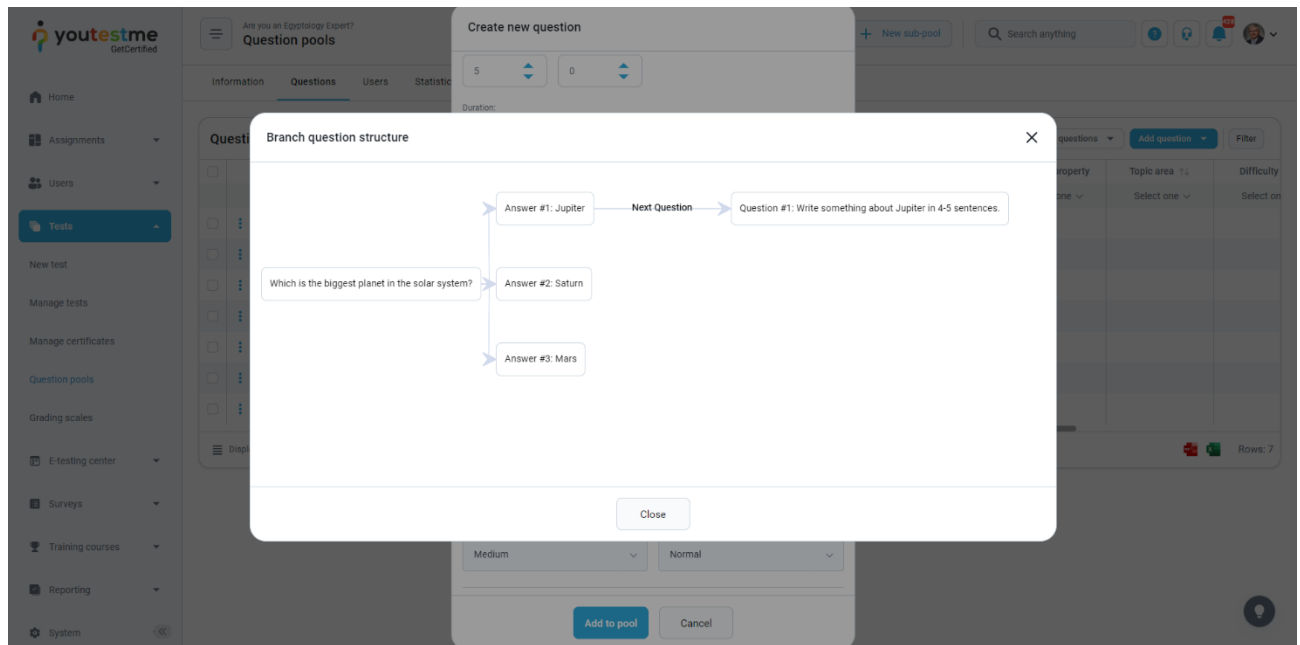
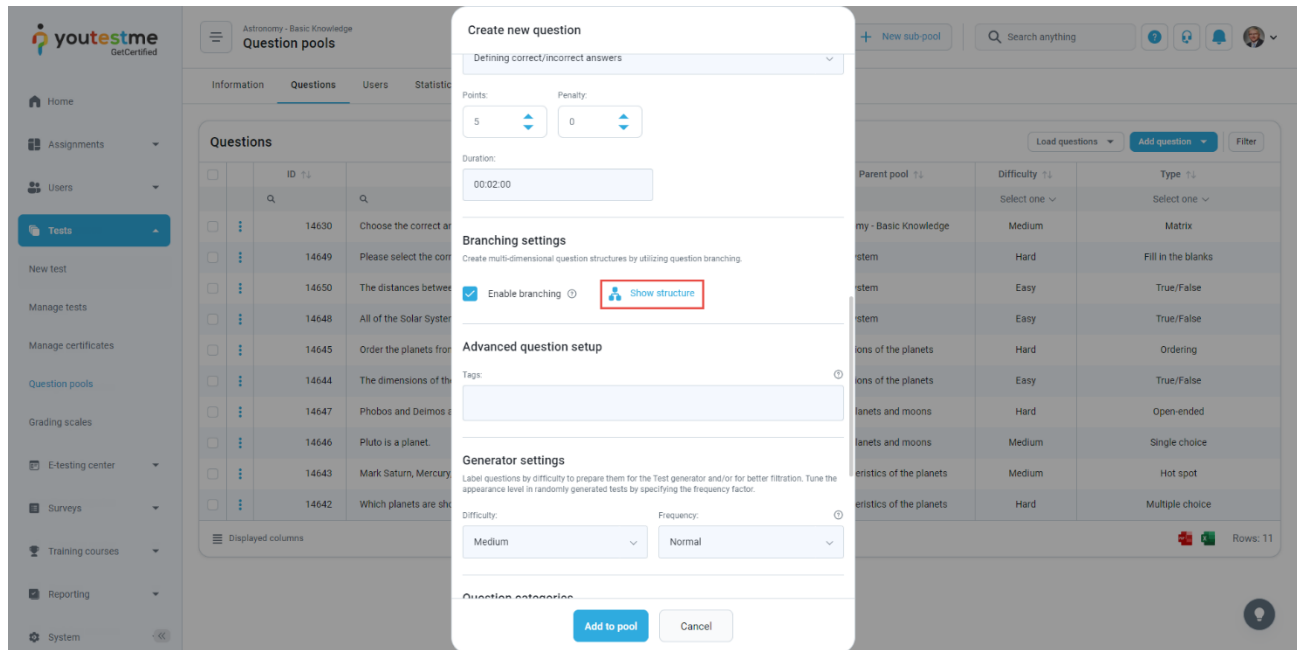
6. Configure branching question settings and save the branch for the answer.



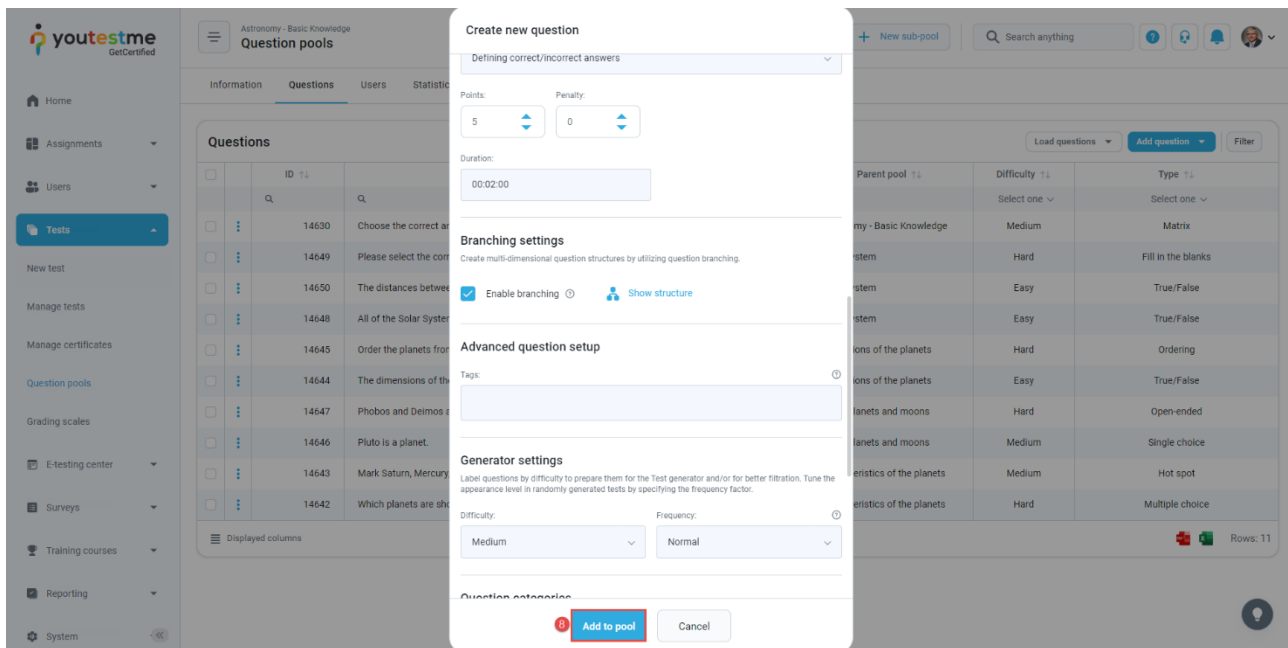
7. The answer can have as many branching questions as you wish, and you can see the list of all questions in the branch.



To see the branching structure, select the **Show structure** option.

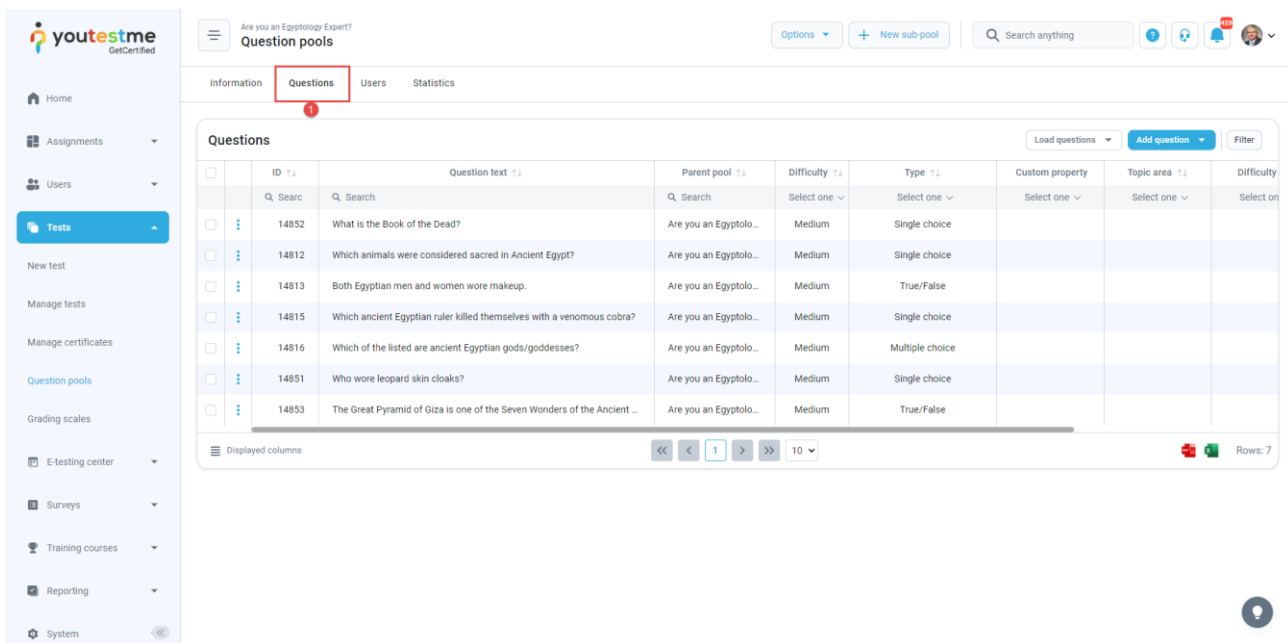


8. Add the question to the question pool by clicking the **Add to the pool** button.

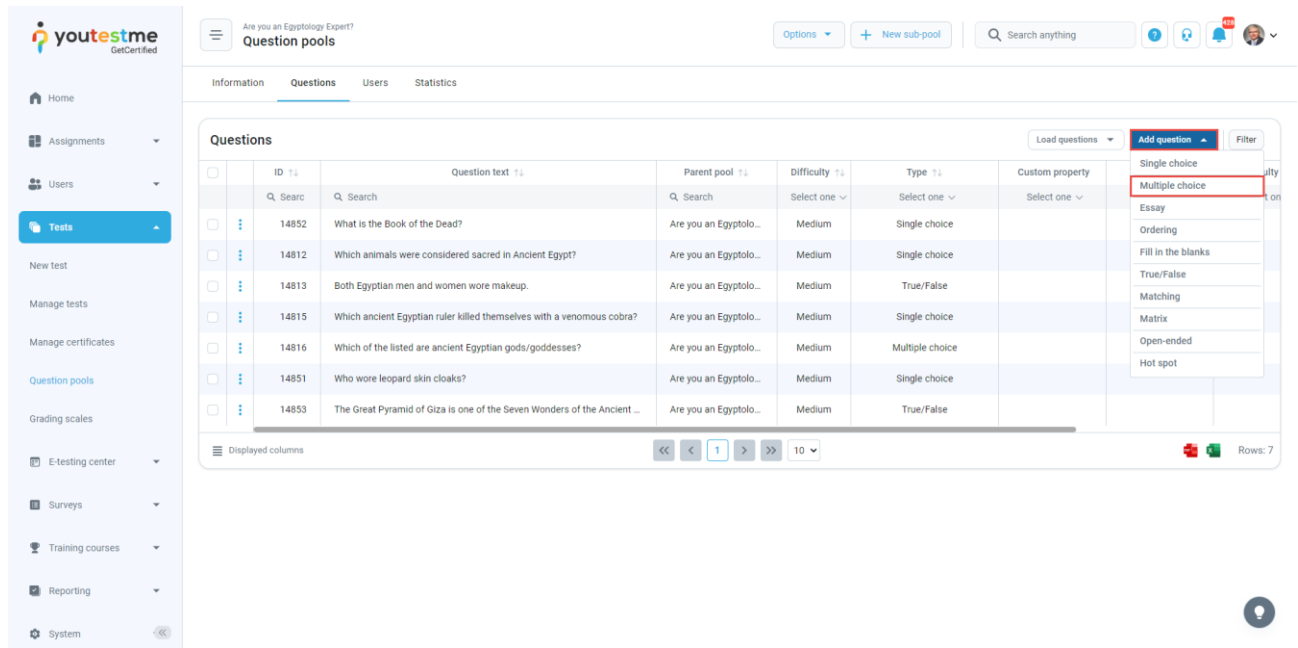


4 Multiple Choice Branching

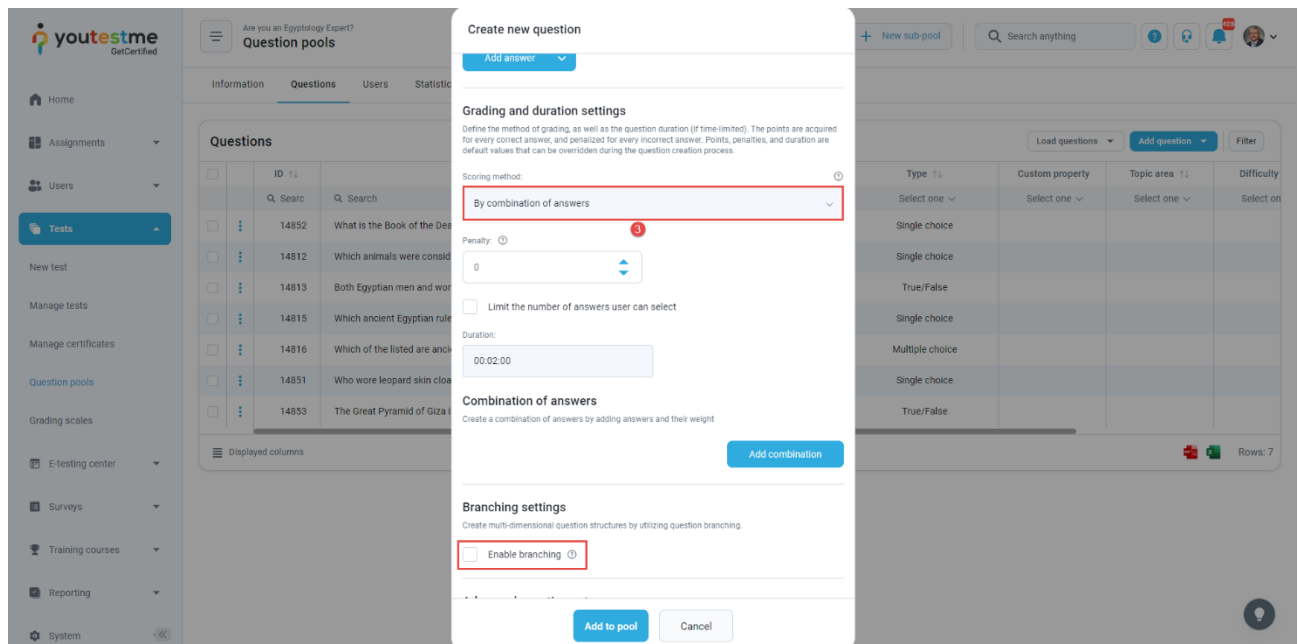
1. To add multiple-choice questions to a newly created or existing question pool, select the **Questions** tab.



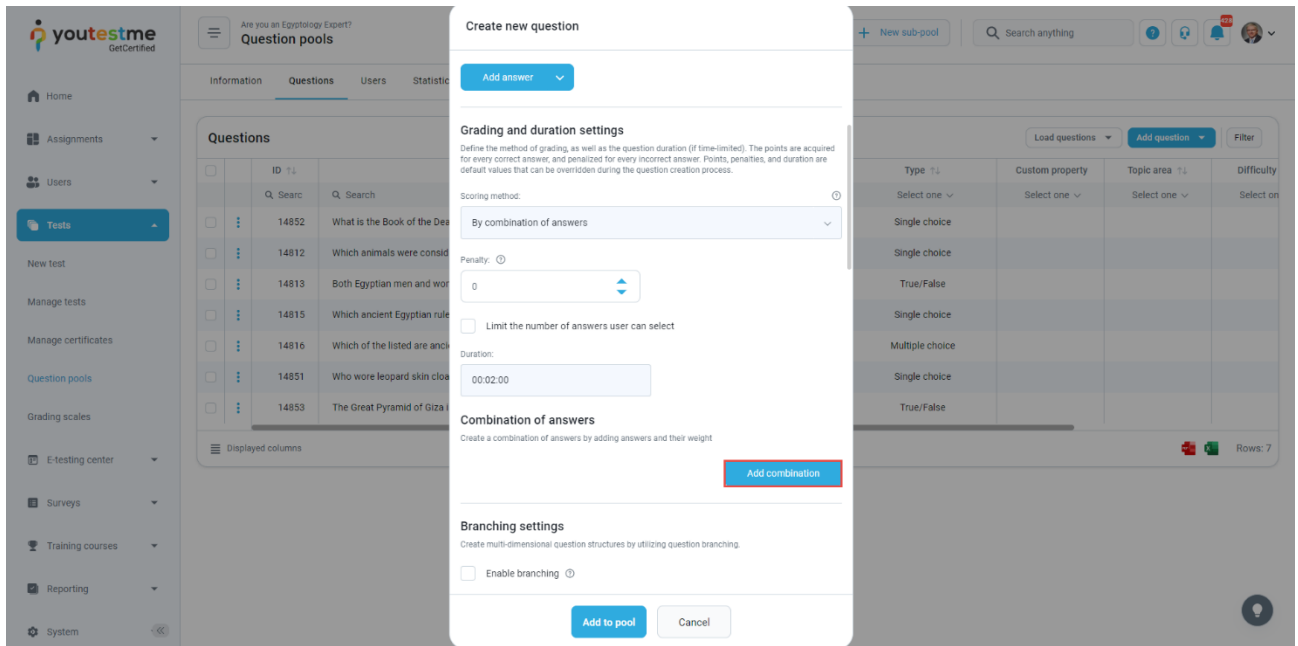
- Click on the **Add question** button and select the **Multiple choice** option.



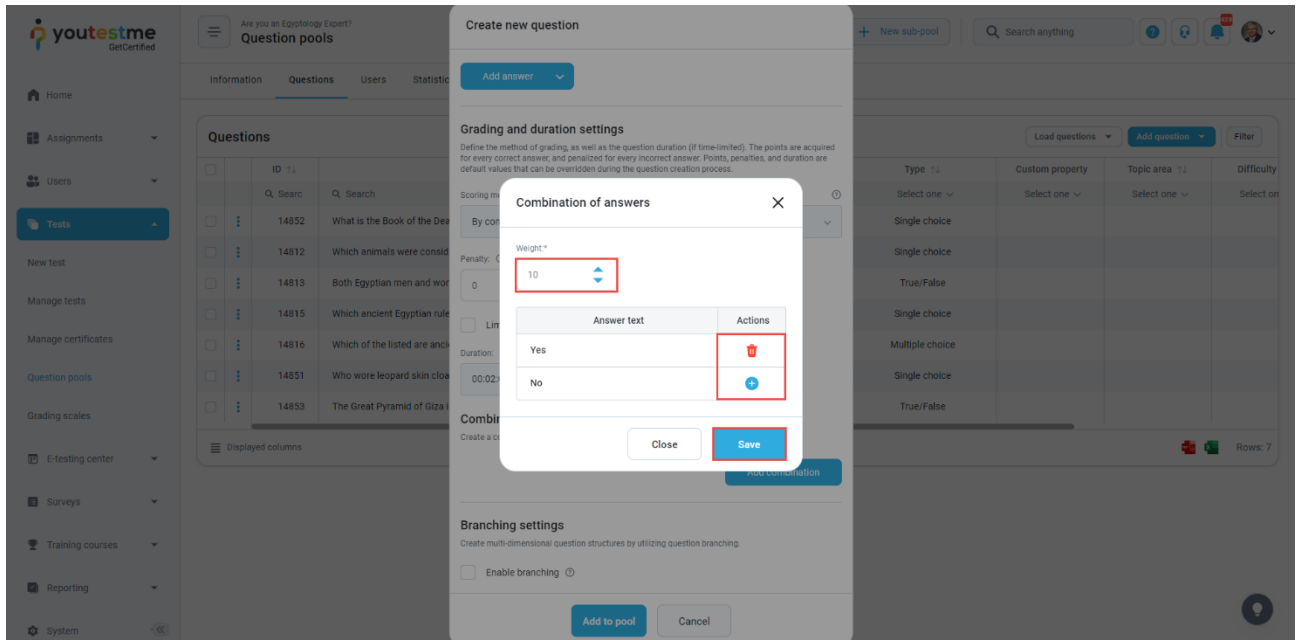
- Open the dropdown menu for the scoring method and select **By combination of answers**. Multiple choice question type branching is enabled only with this scoring method.



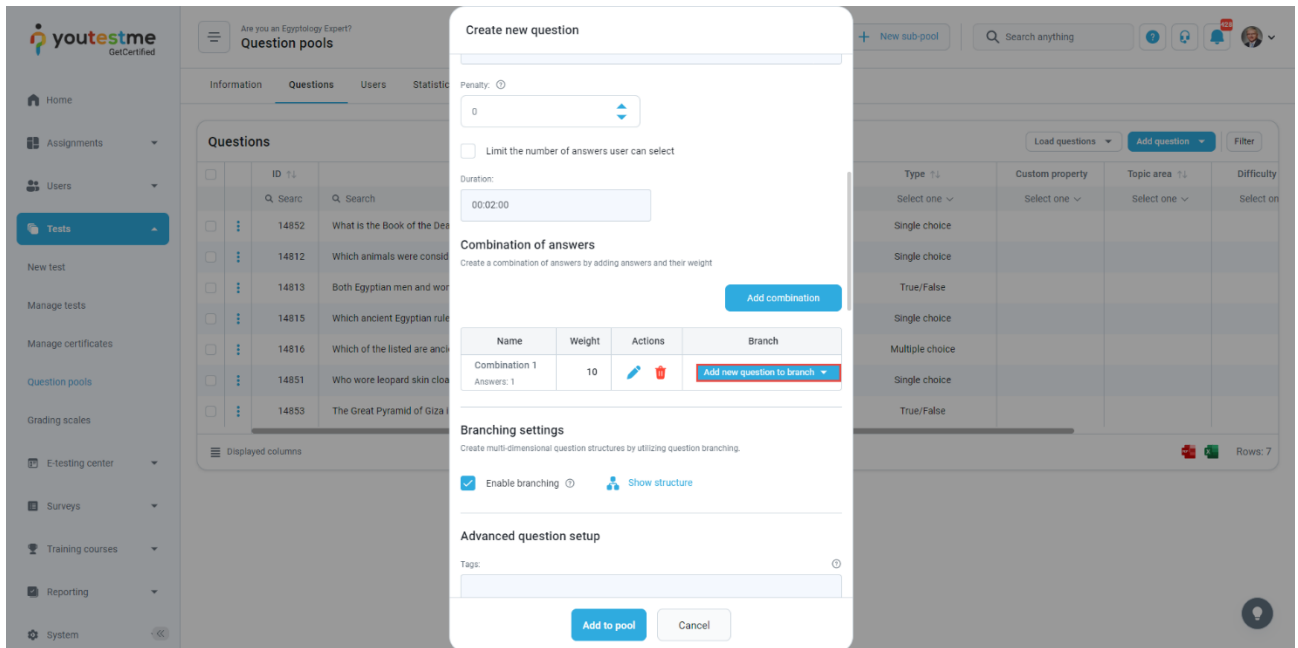
- Fill out question text and answers fields and select the **Add a combination of answers** button.



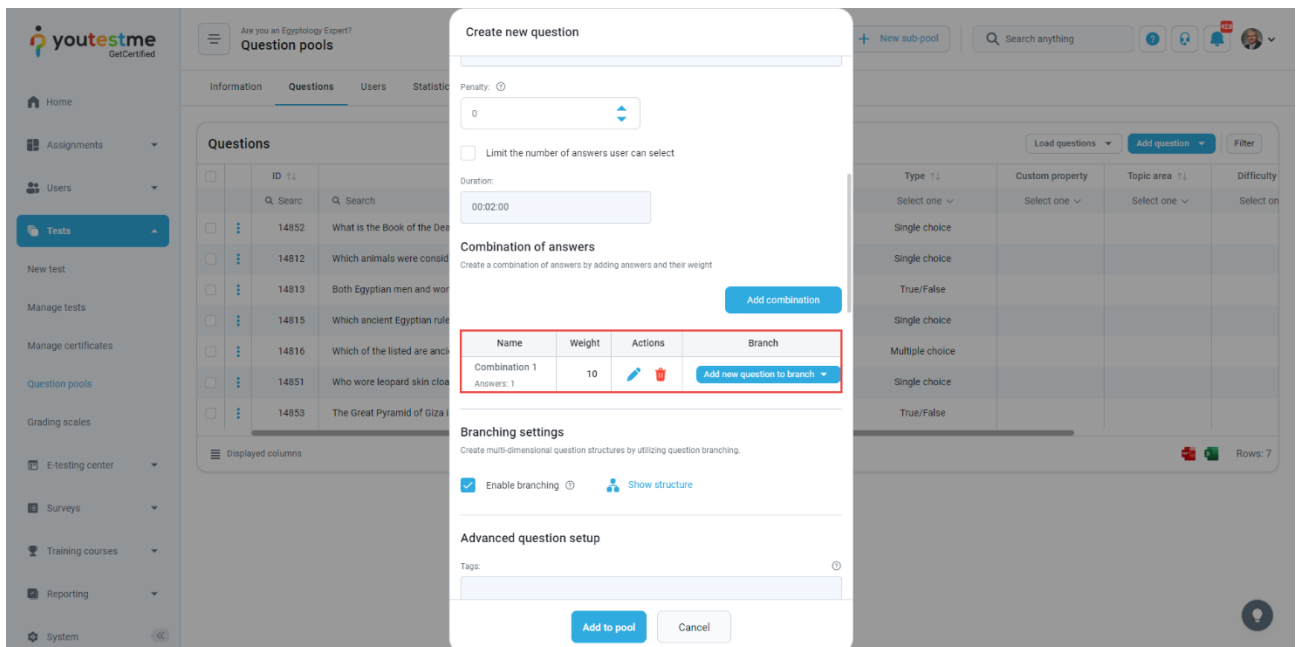
- Add a specific combination of answers by selecting the **Add** button for each answer, and enter the weight (points) for each combination. Click on the **Save** button to save the changes when you finish.



- To add a question in the branch for each combination, click the **Add new question to branch** button and select the question type from the drop-down list.

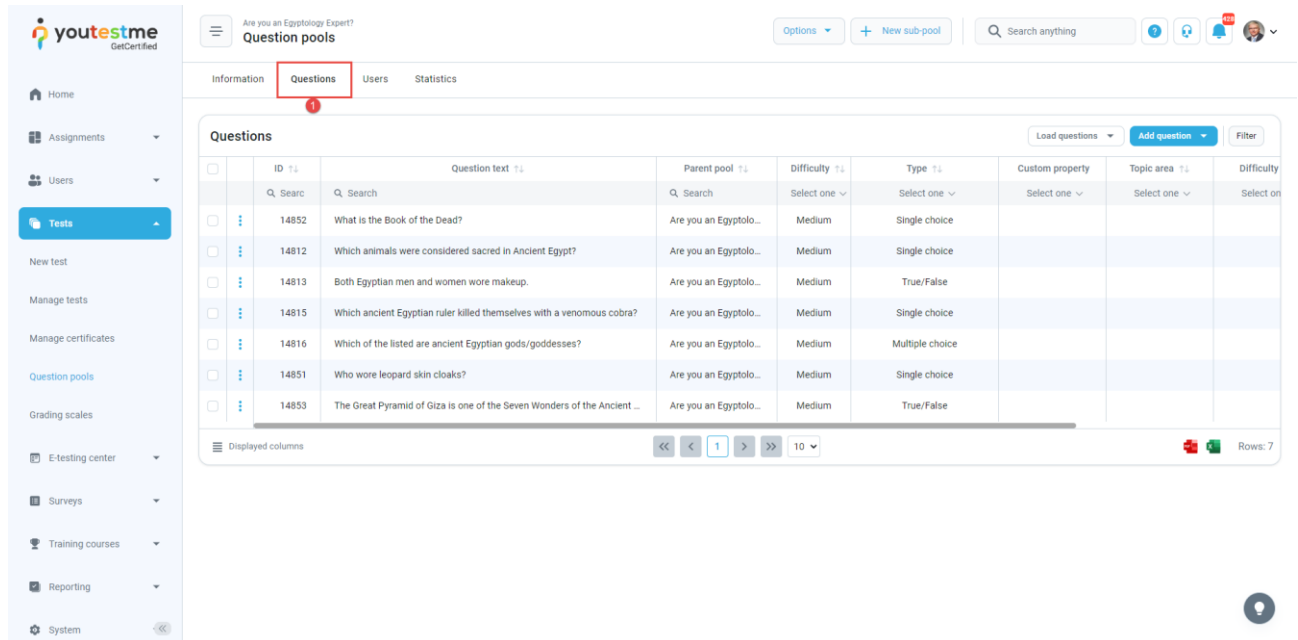


- The **Weight** column displays the points for each combination. In the **Actions** column, you can edit the answer group, delete a group, and in the **Branch** column, you can or edit a question in the branch.

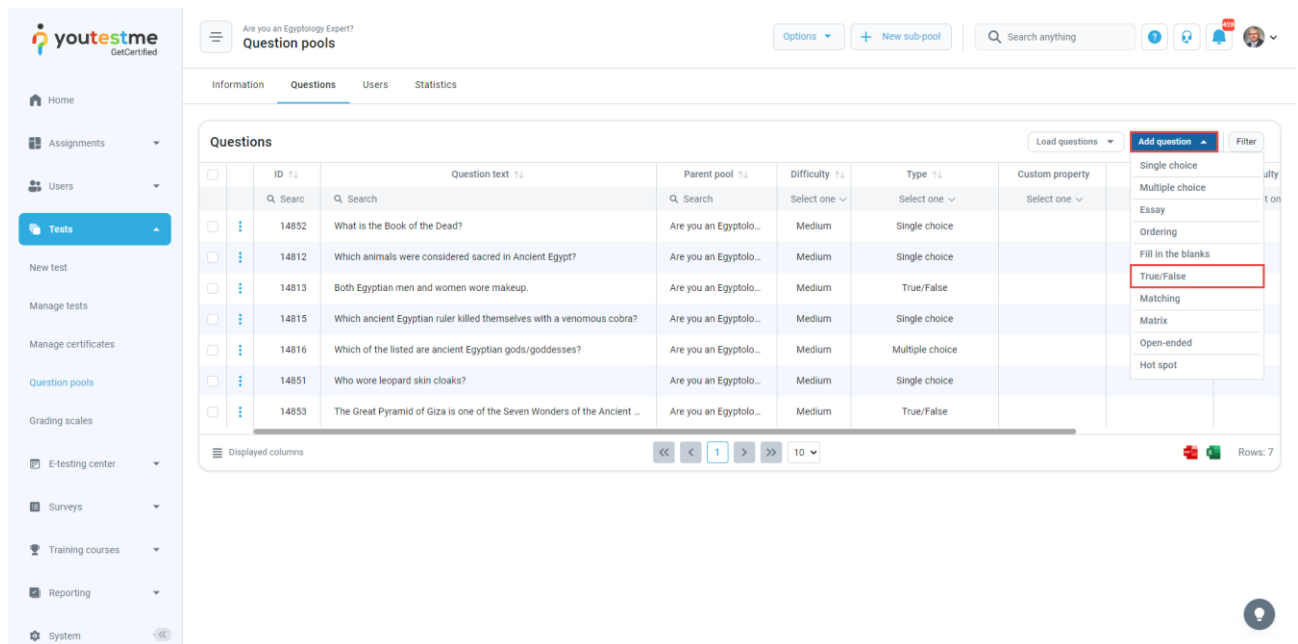


5 True/false branching

1. To add a true/false question to a newly created or an existing question pool, select the **Questions** tab.



2. Click on the **Add question** button and select the **True/False** option.



3. Repeat steps three to eight from the second chapter (single choice branching).