



YouTestMe

Multiple choice question type

File name	Multiple Choice Question Type
Author	YouTestMe
Confidentiality	Internal or Public
Last save date	Tuesday, October-25-2022 at 3:13:00 PM

Table of Contents

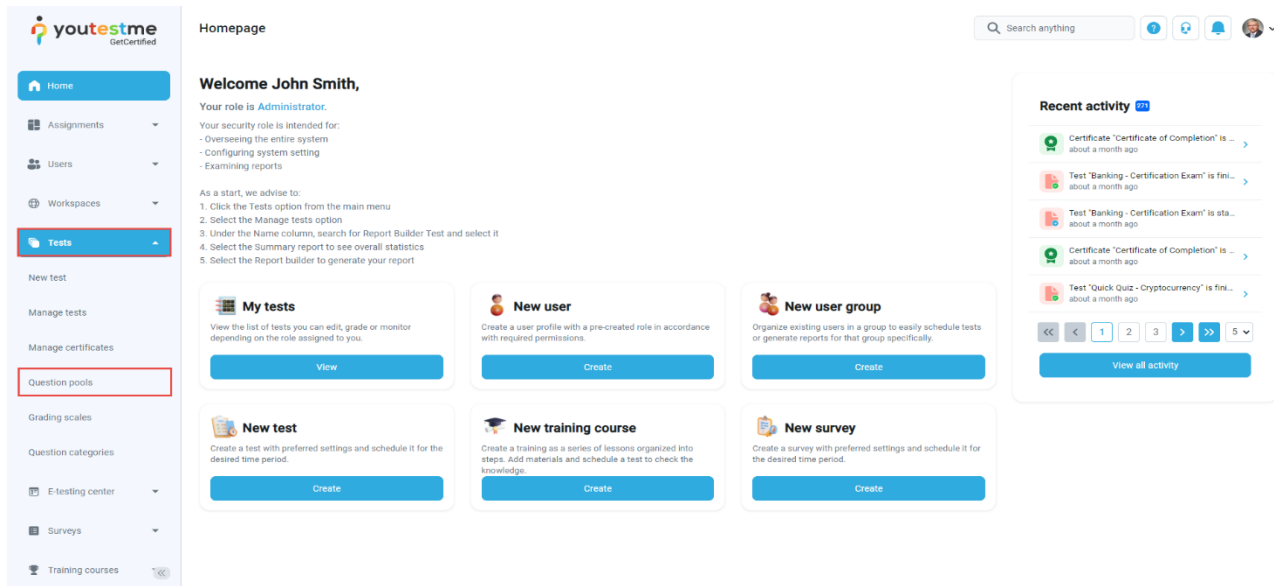
1	Introduction.....	2
2	Adding Questions to a question pool.....	2
3	Multiple choice question type	4
4	Scoring method – By answer weight.....	5
5	Scoring method – By combination of answers.....	6

1 Introduction

This document's purpose is to explain the requirement R02 - Multiple response (select more than 1 choice - pick the best 3 of 8 possible responses). Must be able to limit the number of selections the student can make. Ability to assign different point values to each choice option.

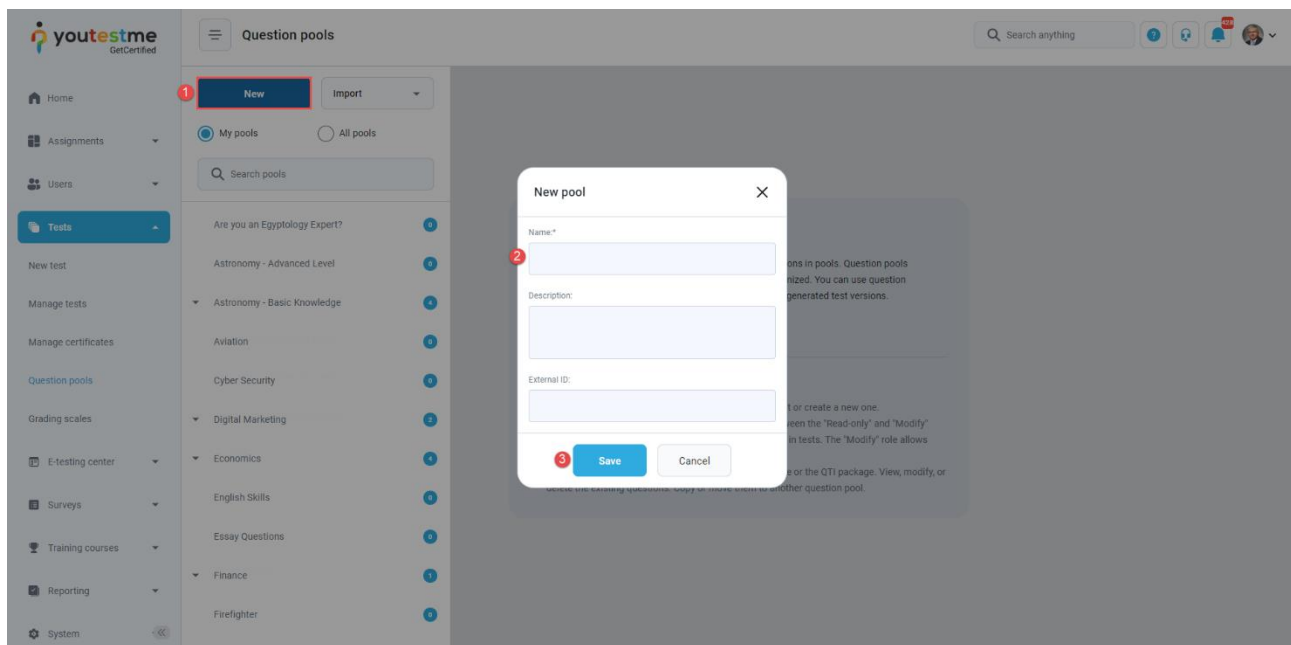
2 Adding Questions to a question pool

To access the question pool, you should navigate to **Tests** and select **Question pools**.



To add questions into a new question pool, you should:

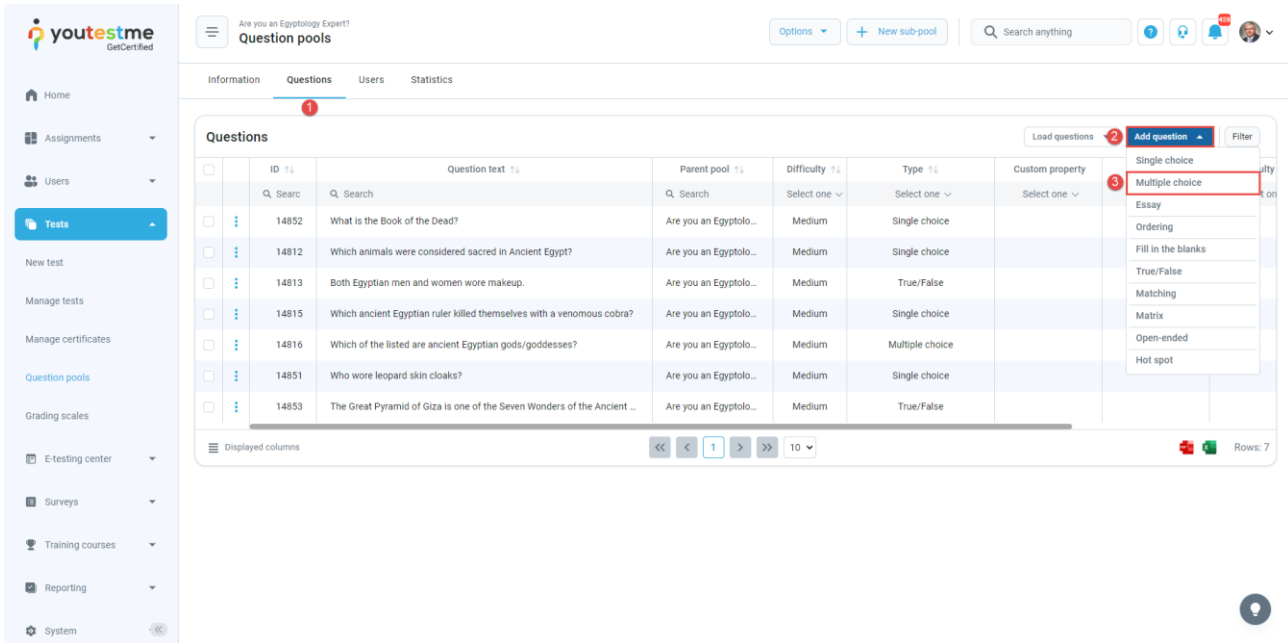
1. Click the **New** button.
2. Enter the name of the question pool.
3. Click **Save**.



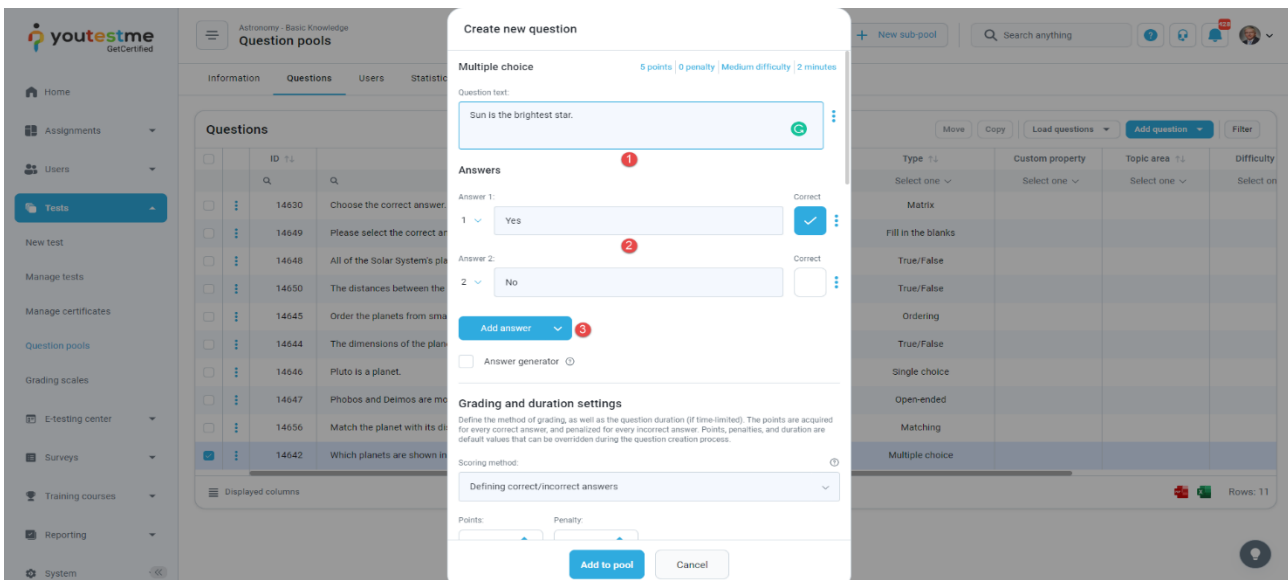
3 Multiple choice question type

Multiple-choice questions offer several possible answers, while more than one can be selected as correct. To create a multiple-choice question, you should:

1. Click on the **Questions** tab.
2. Click the **Add question** button and select the **Multiple-choice** option.



1. Enter the question text.
2. Enter answer text.
3. Add more answers by clicking on the **Add answer** button.

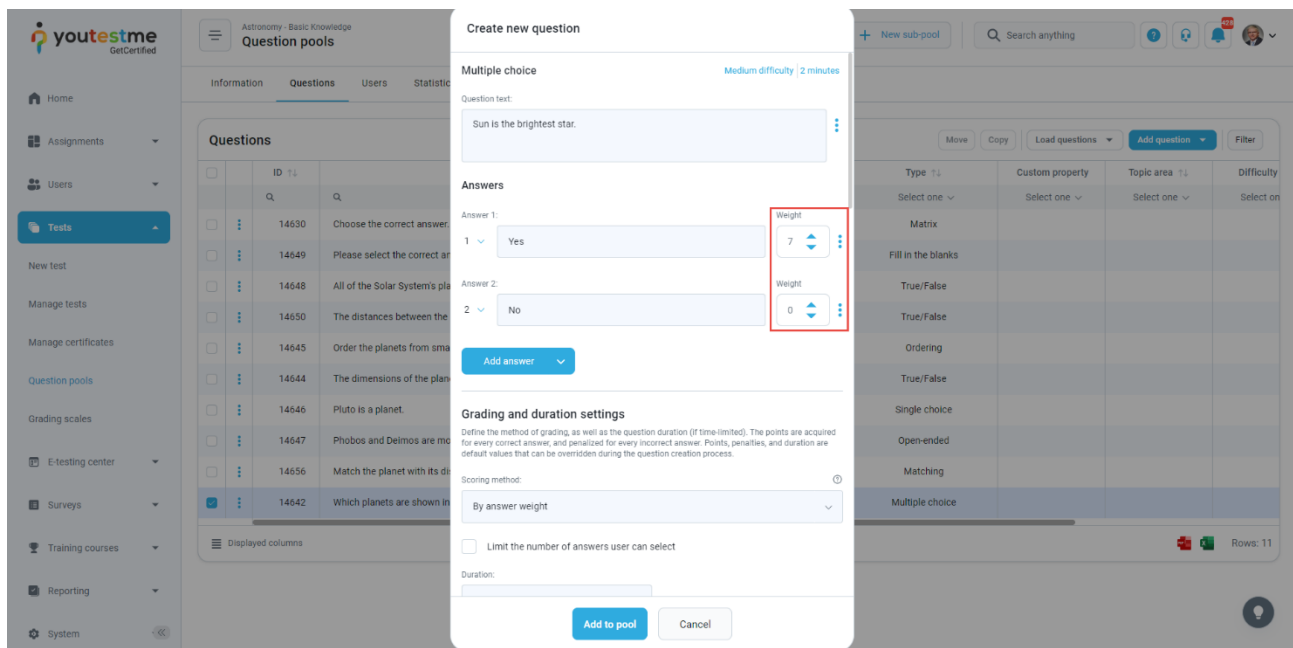
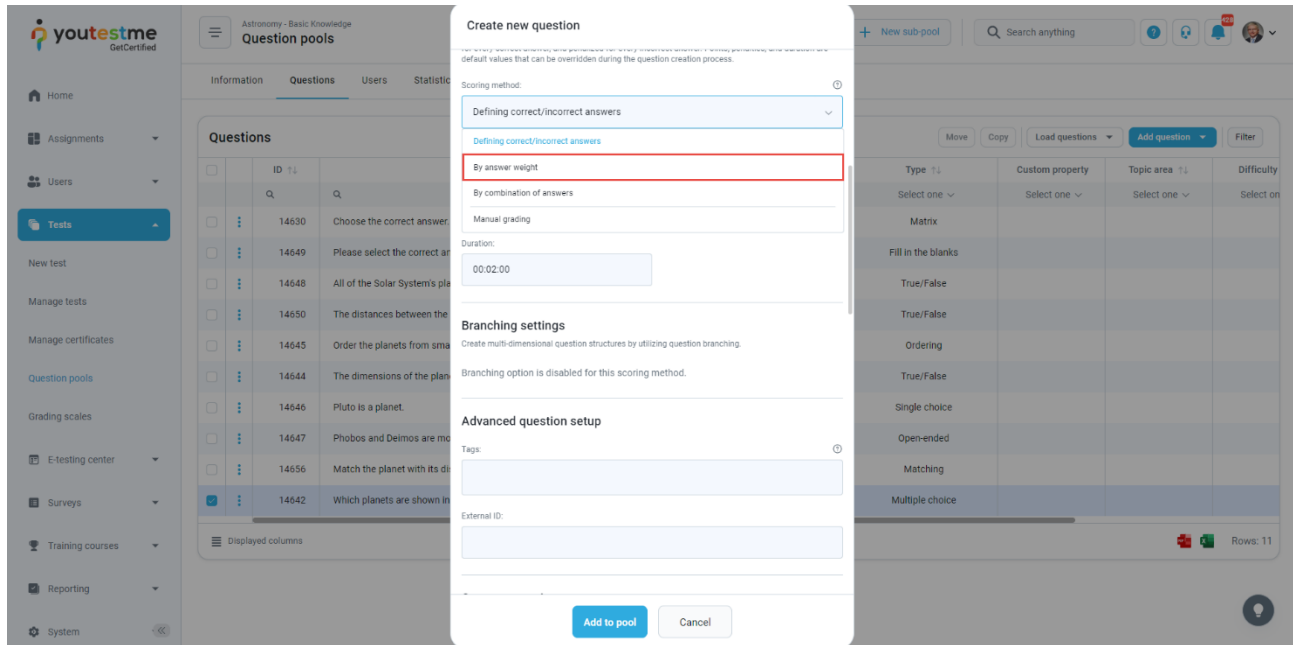


4 Scoring method – By answer weight

The scoring method **By answer weight** allows you to define points for each answer. A candidate will be awarded different points depending on the answer chosen.

To create a multiple-choice question with a scoring method **By answer weight**, you should:

1. Set the scoring method to “By answer weight”.
2. Define the points for each answer.

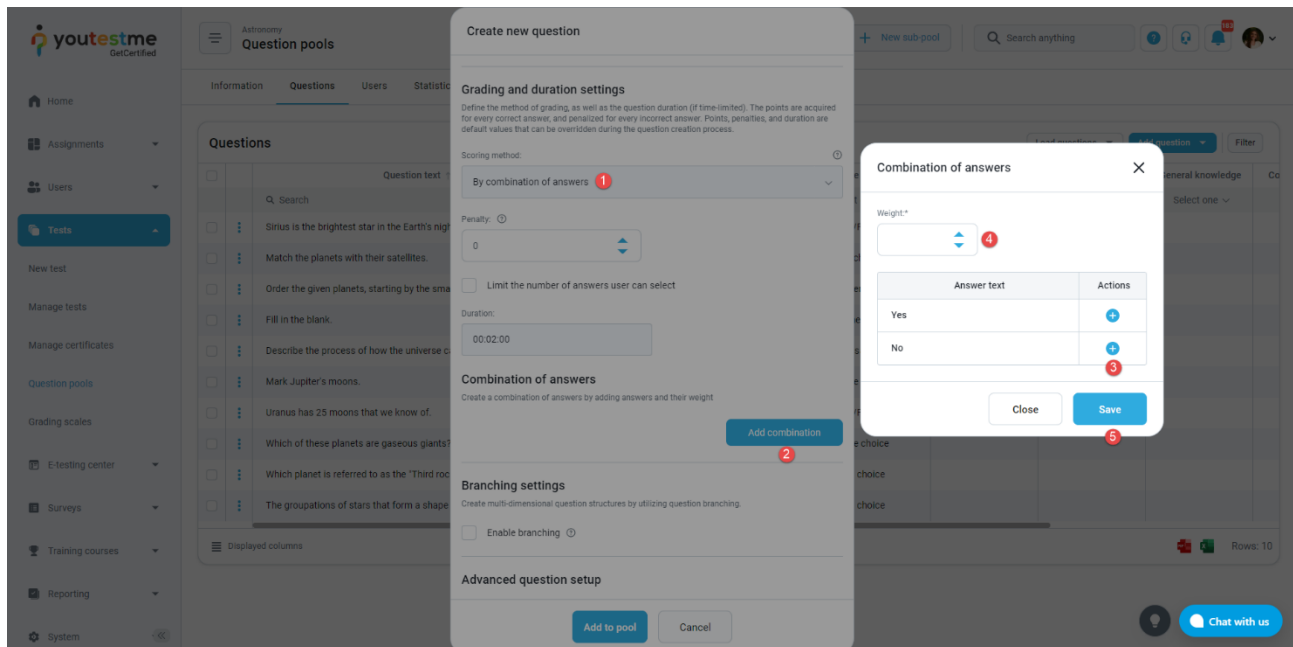


5 Scoring method – By combination of answers

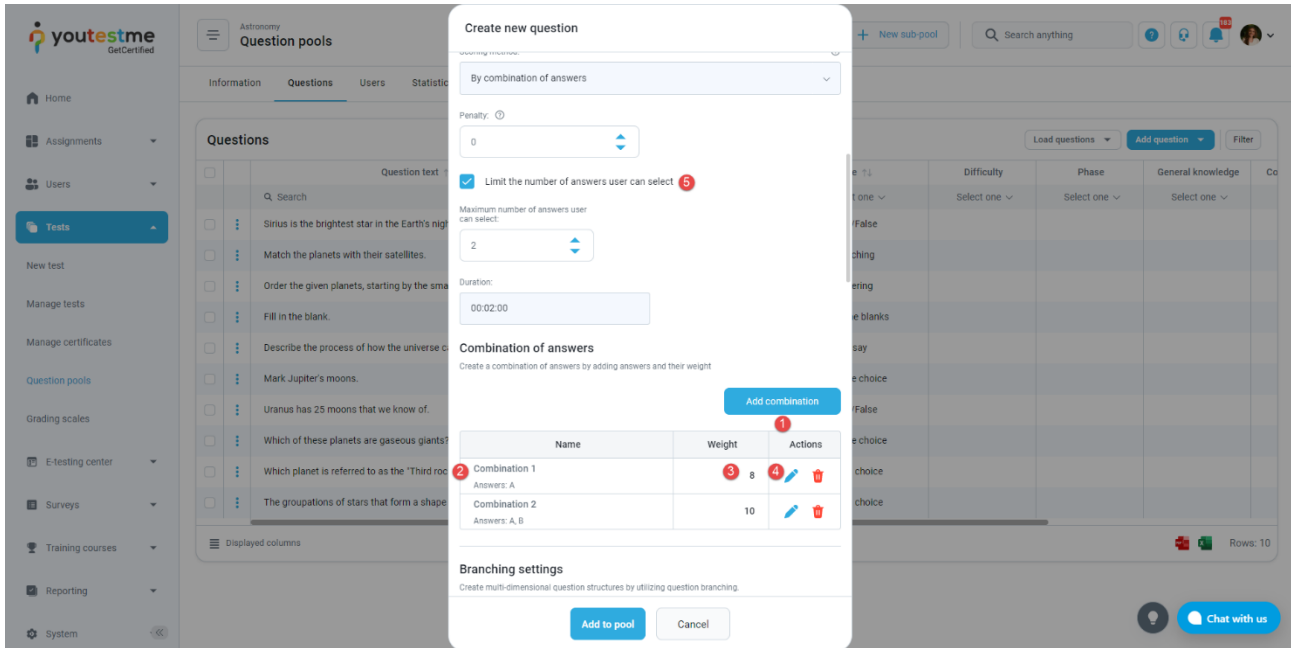
The scoring method **By combination of answers** allows you to predefine the combination of answers the candidate should select to obtain points.

To create a multiple-choice question with a scoring method **By combination of answers**, you should:

1. Set the scoring method to **By combination of answers**.
2. Click on the **Add combination** button.
3. Click on the plus icon next to the answer text to include an answer into a combination.
4. Define a number of points a specific combination will carry.
5. Click the **Save** button.



1. Click **Add combination** to predefine more answers combinations.
2. See which answers are included in which combination.
3. See the points each combination carries.
4. Edit combination.
5. Define the maximum number of answers a candidate can select.



The screenshot shows the 'Create new question' dialog box in the youtestme interface. The question type is set to 'By combination of answers'. The 'Penalty' is 0. The 'Limit the number of answers user can select' checkbox is checked, with a value of 2. The 'Duration' is 00:02:00.

Combination of answers
Create a combination of answers by adding answers and their weight

Name	Weight	Actions
Combination 1 Answers: A	8	✎ ✖
Combination 2 Answers: A, B	10	✎ ✖

Branching settings
Create multi-dimensional question structures by utilizing question branching.

Buttons: Add to pool, Cancel