



YouTestMe

Matching questions

File name	YTM Document Template
Author	YouTestMe
Confidentiality	Internal or Public
Last save date	Tuesday, October-25-2022 at 3:14:00 PM

Table of Contents

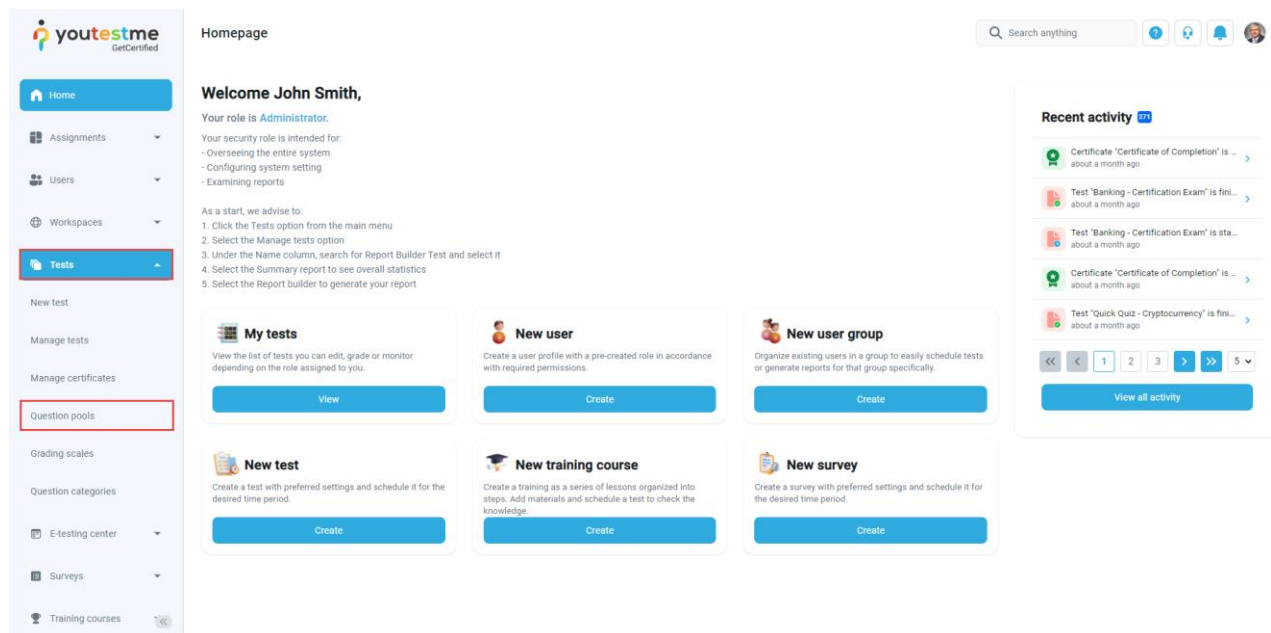
1	Introduction.....	2
2	Adding questions to a question pool	2
3	Matching question type	3

1 Introduction

This document's purpose is to explain the requirement R03 – Matching: Relate items in column A with items in Column B.

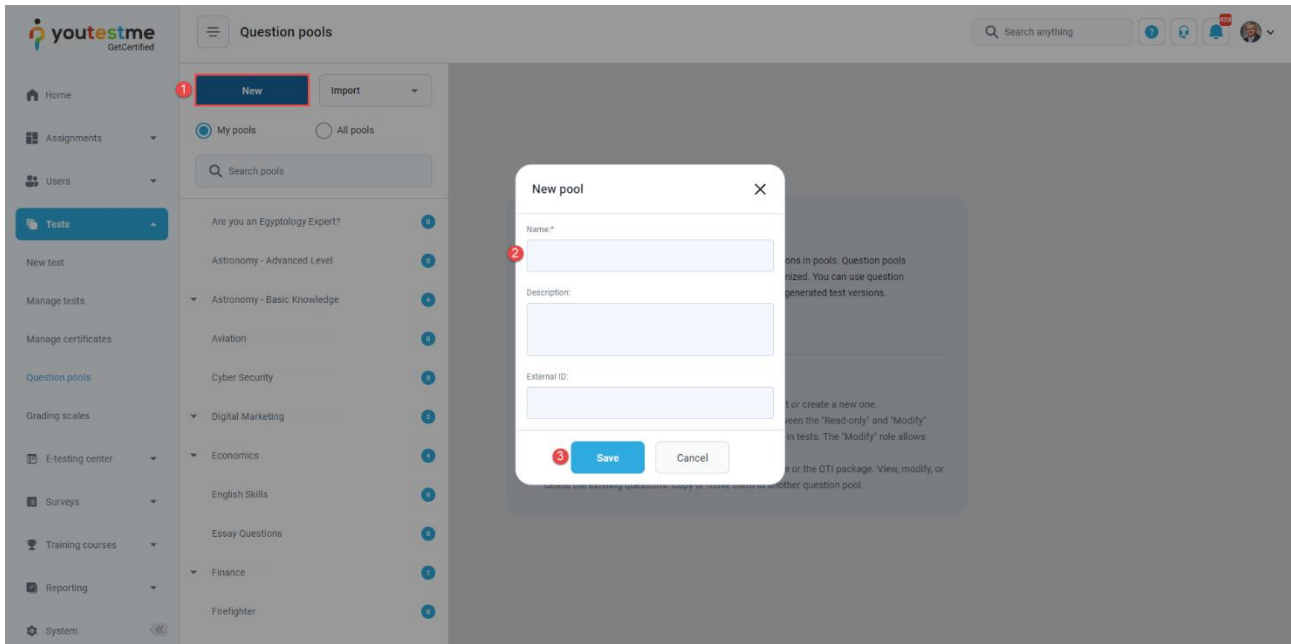
2 Adding questions to a question pool

To access the question pool, you should navigate to **Tests** and select **Question pools**.



To add questions into a new question pool, you should:

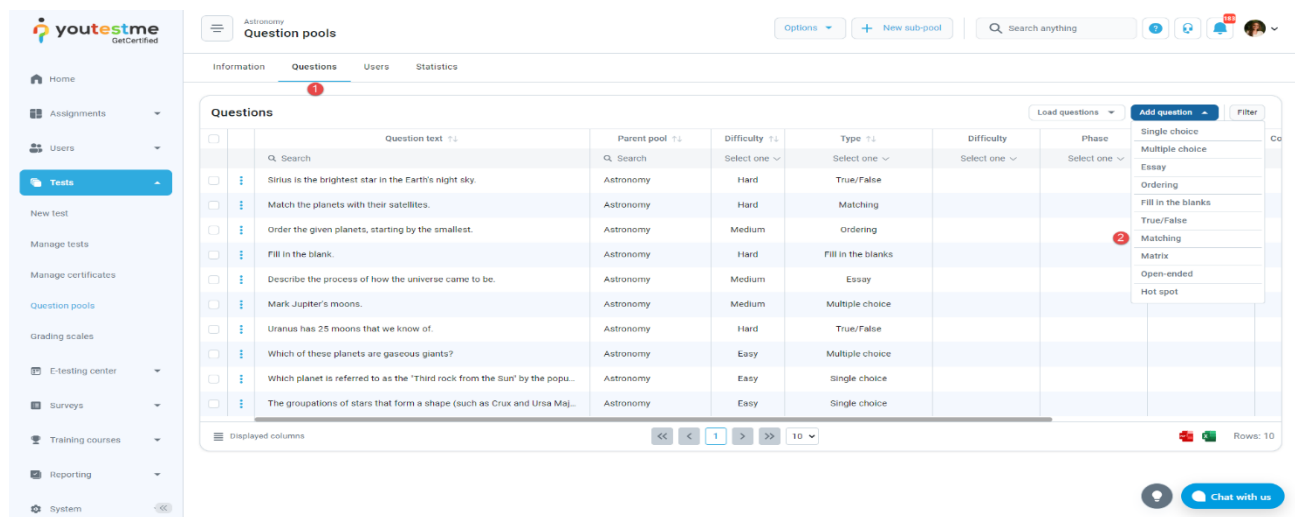
1. Click the **New** button.
2. Enter the name of the question pool.
3. Click **Save**.



3 Matching question type

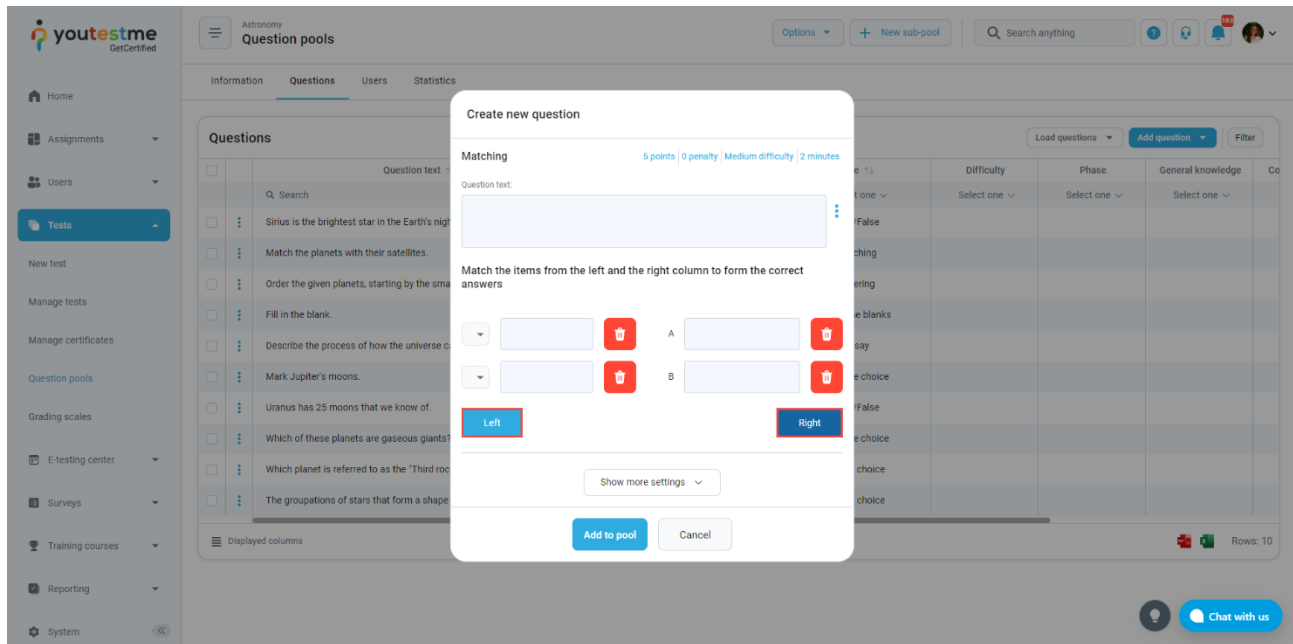
Multiple-choice questions offer several possible answers, while more than one can be selected as correct. To create a multiple-choice question, you should:

1. Click on the **Questions** tab.
2. Click the **Add question** button and select the **Matching** option.



Add a couple of elements to the left side by clicking on the button **Left** and add a couple of elements to

the right side by clicking the **Right** button.



1. Enter the question text.
2. Enter the items from the left and the items from the right.
3. Match items from left with items from the right by choosing the correct answer from the dropdown menu.

