



# YouTestMe

Matrix questions

<b>File name</b>	Matrix questions
<b>Author</b>	YouTestMe
<b>Confidentiality</b>	Internal or Public
<b>Last save date</b>	Tuesday, October-25-2022 at 3:16:00 PM

## Table of Contents

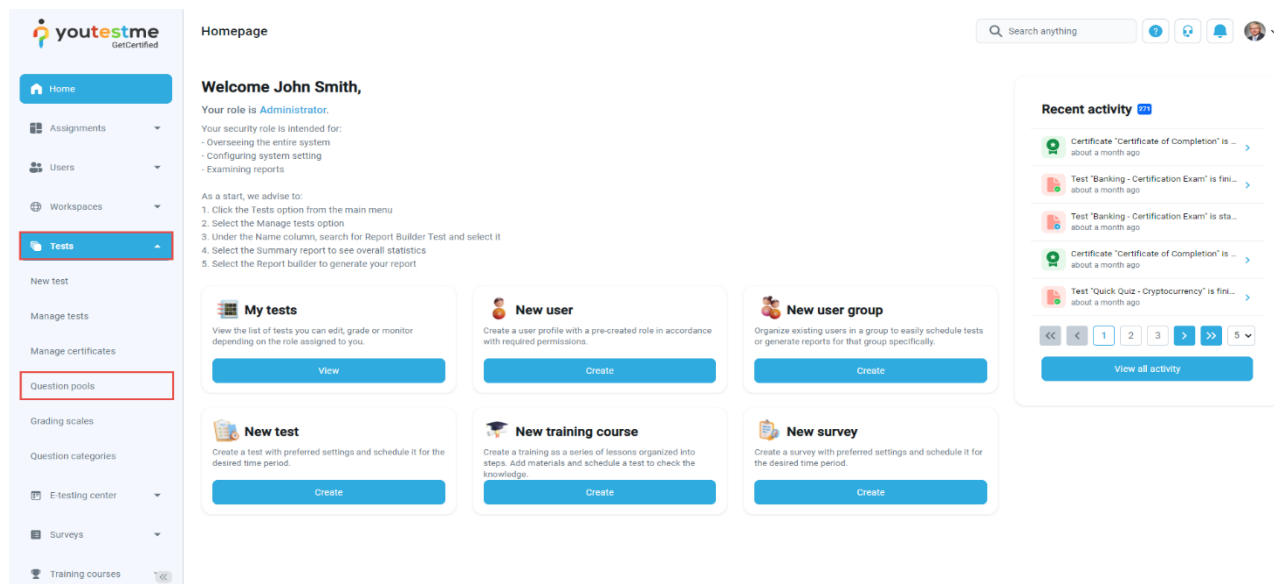
1	Introduction.....	2
2	Adding questions to a question pool .....	2
3	Matrix type questions .....	3

## 1 Introduction

This document's purpose is to explain how to create matrix questions and add them to the new-created or existing question pool.

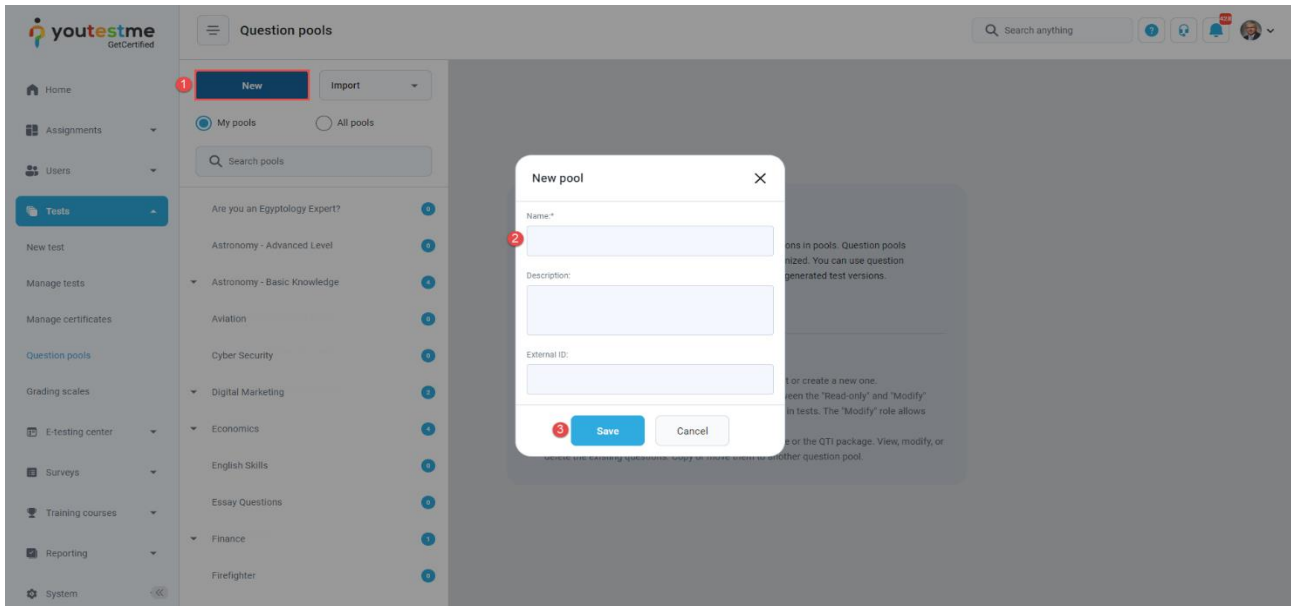
## 2 Adding questions to a question pool

To access the question pool, you should navigate to **Tests** and select **Question pools**.



To add questions into a new question pool, you should:

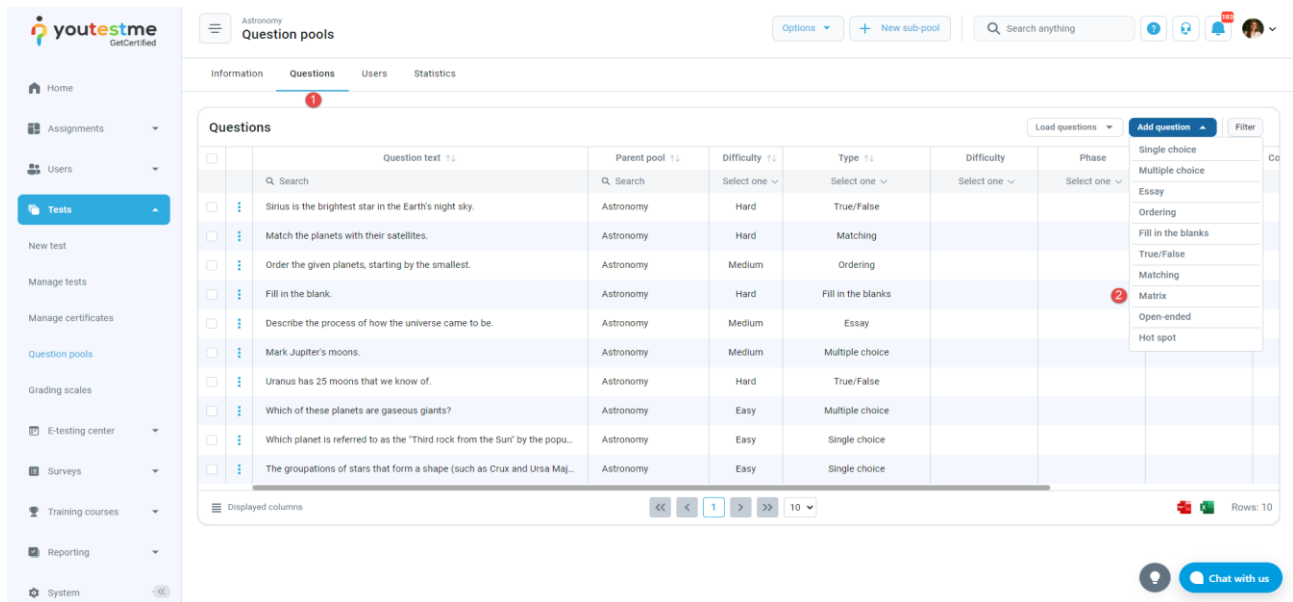
1. Click the **New** button.
2. Enter the name of the question pool.
3. Click **Save**.



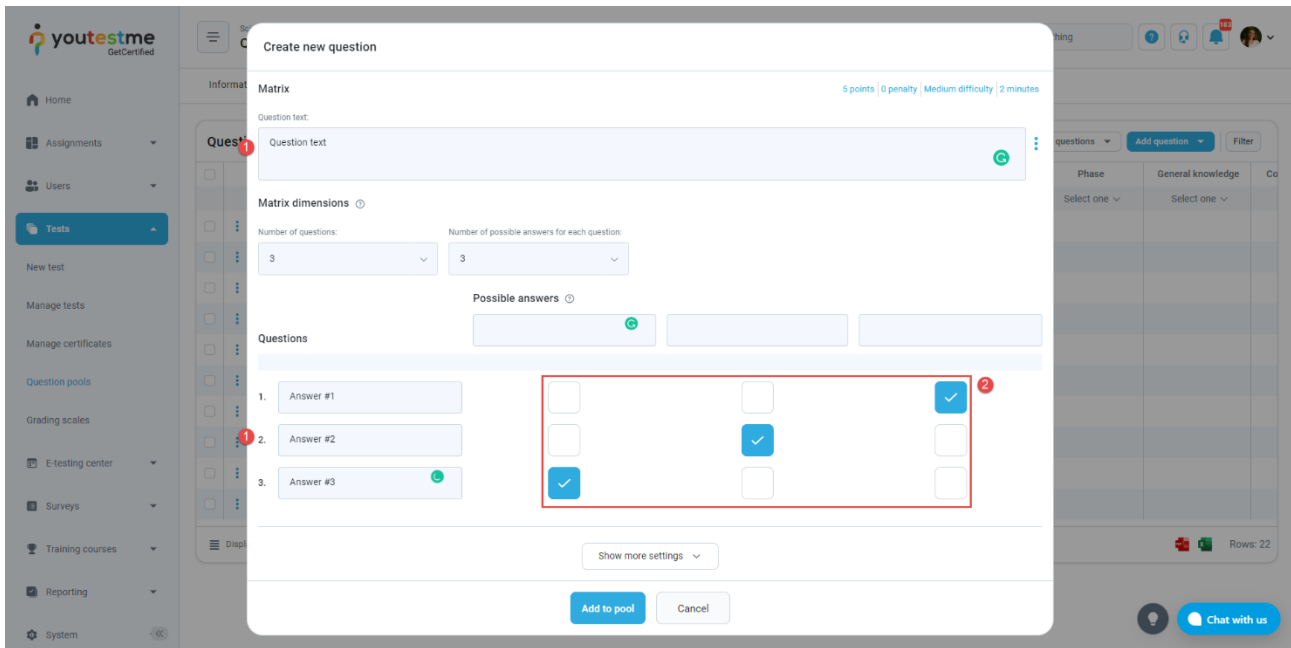
## 3 Matrix type questions

To create a single choice question, you should:

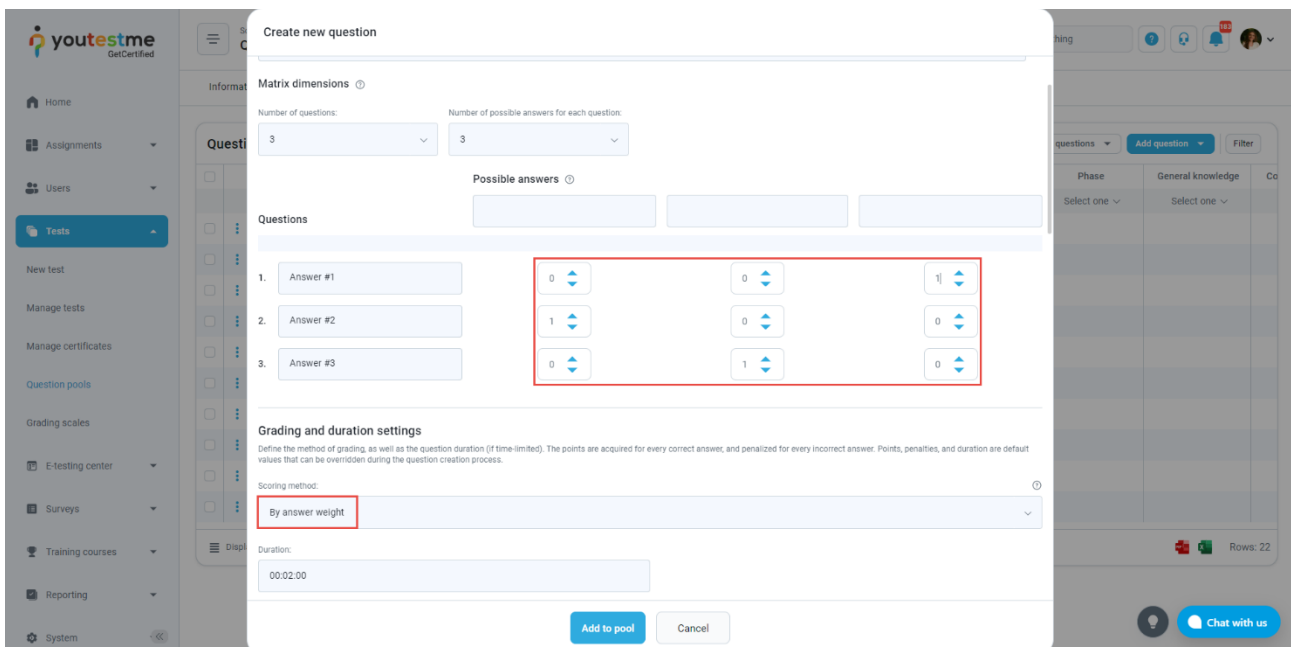
1. Click on the **Questions** tab.
2. Click the **Add question** button and select the **Matrix** option.



1. Add question text and a few items and answers.
2. Add text to all the elements and specify the correct answers.



You can also specify answer weights by hovering to the score method section and clicking on the **Answer by weight** option.



After defining the questions and answers, click on the **Add to the pool** button to save your question into the question pool.

