



# YouTestMe

Multiple fill-in-the-blanks questions

<b>File name</b>	Multiple fill-in-the-blanks questions
<b>Author</b>	YouTestMe
<b>Confidentiality</b>	Internal or Public
<b>Last save date</b>	Wednesday, October-19-2022 at 2:19:00 PM

## Table of Contents

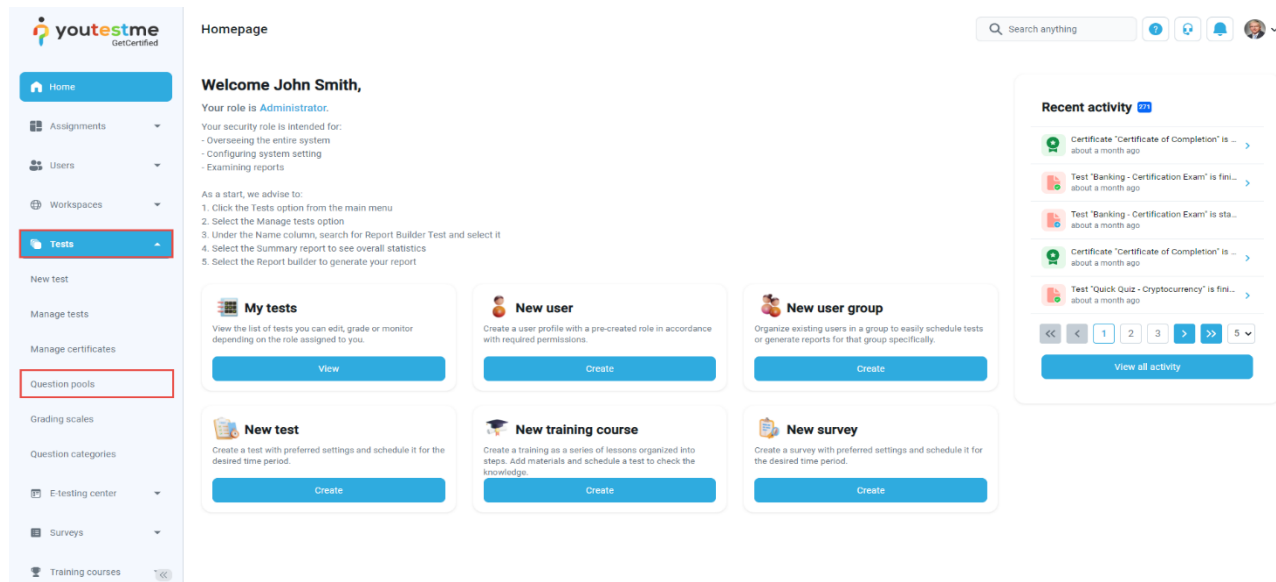
1	Introduction.....	2
2	Adding questions to a question pool .....	2
3	Multiple fill-in-the-blanks type questions .....	3

## 1 Introduction

This document's purpose is to explain how to create a multiple fill-in-the-blanks questions and add them to the new-created or existing question pool.

## 2 Adding questions to a question pool

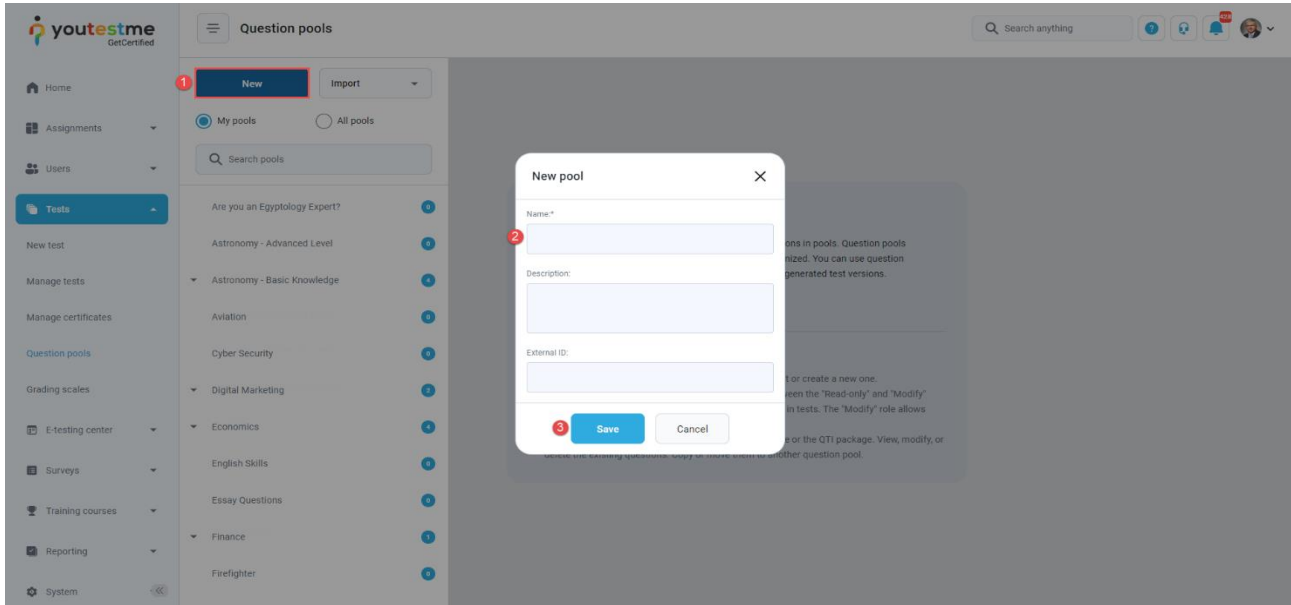
To access the question pool, you should navigate to **Tests** and select **Question pools**.



The screenshot shows the YouTestMe dashboard. On the left is a navigation sidebar with options: Home, Assignments, Users, Workspaces, Tests (highlighted), New test, Manage tests, Manage certificates, Question pools (highlighted with a red box), Grading scales, Question categories, E-testing center, Surveys, and Training courses. The main content area is titled 'Homepage' and includes a welcome message for John Smith, an Administrator. Below the welcome message are several action cards: 'My tests' (View), 'New user' (Create), 'New user group' (Create), 'New test' (Create), 'New training course' (Create), and 'New survey' (Create). On the right side, there is a 'Recent activity' section showing a list of recent events with a 'View all activity' button at the bottom.

To add questions into a new question pool, you should:

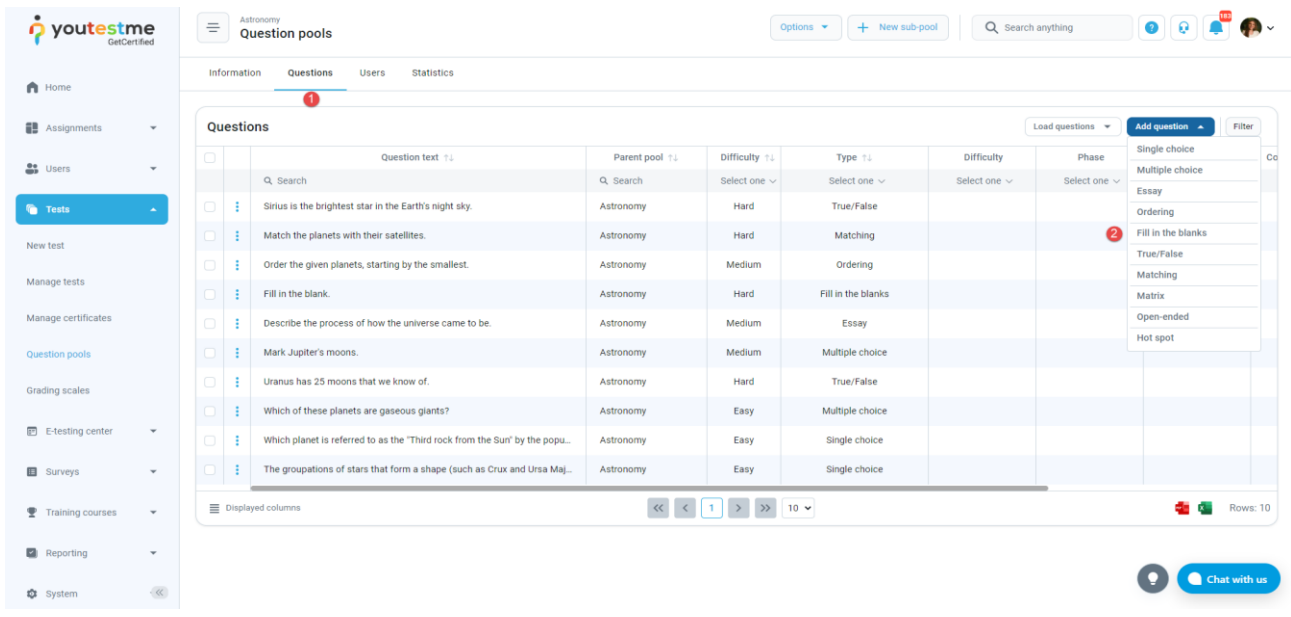
1. Click the **New** button.
2. Enter the name of the question pool.
3. Click **Save**.



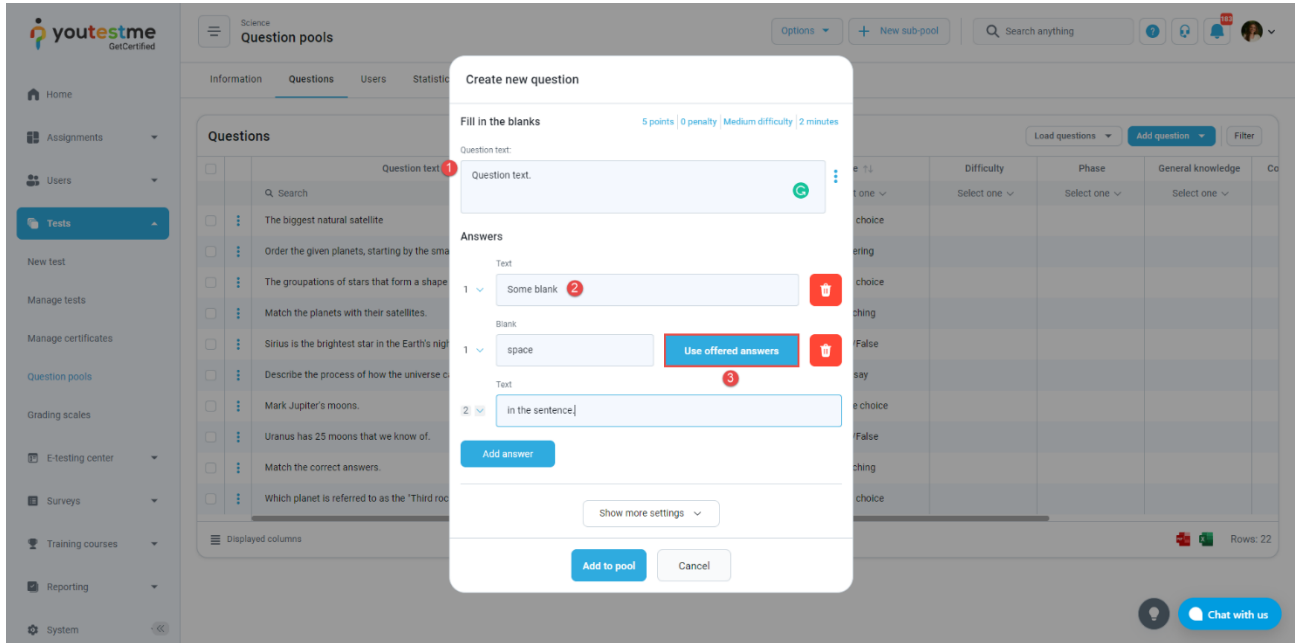
## 3 Multiple fill-in-the-blanks type questions

To create a single choice question, you should:

1. Click on the **Questions** tab.
2. Click the **Add question** button and select the **Fill-in-the-blanks** option.



1. Add question text.
2. Add text to all the answers.
3. In case you want to associate options for the blank space, click on the **Use offered answers** button.



4. Add as many options as you want, specify their text and label the correct option.
5. After defining the questions and answers, click on the **Add to the pool** button to save your question into the question pool.

