



YouTestMe

Improving the log message for the QTI

| | |
|------------------------|--|
| File name | Improving the log message for the QTI |
| Author | YouTestMe |
| Confidentiality | Public |
| Last save date | Thursday, October-06-2022 at 12:20:00 PM |

Table of Contents

| | | |
|---|---|---|
| 1 | Introduction..... | 2 |
| 2 | Creating the question pool..... | 3 |
| 3 | Importing questions using the QTI import..... | 4 |
| 4 | Confirmation that the requirement is met..... | 5 |

1 Introduction

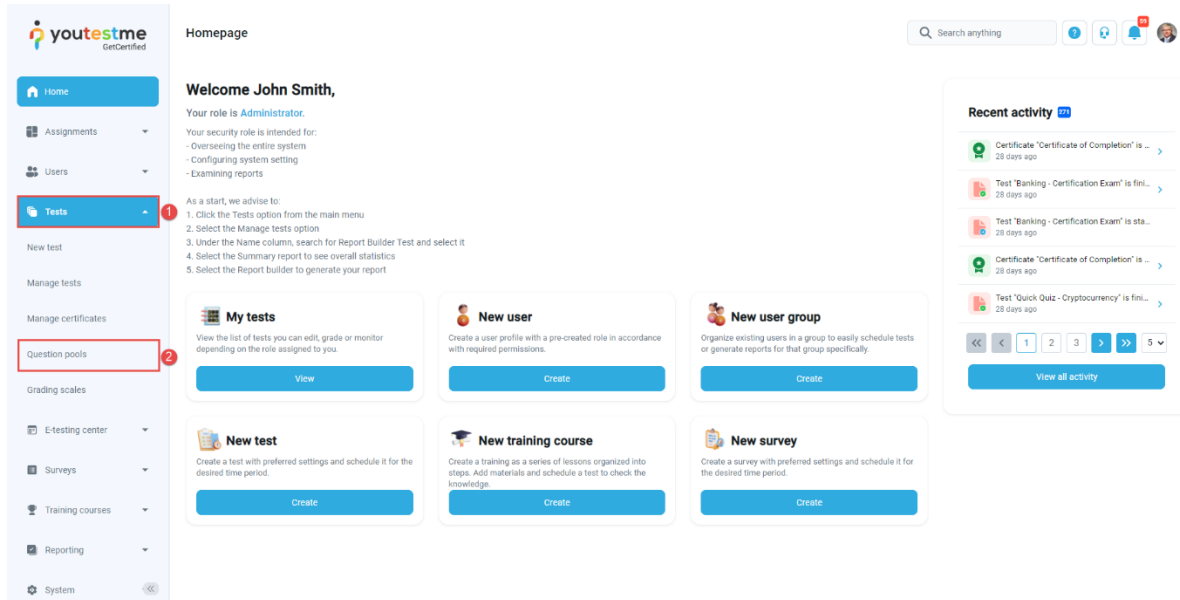
This article explains how to confirm if the following requirement is well implemented:

- Improving the log message for the QTI-based question job importer

2 Creating the question pool

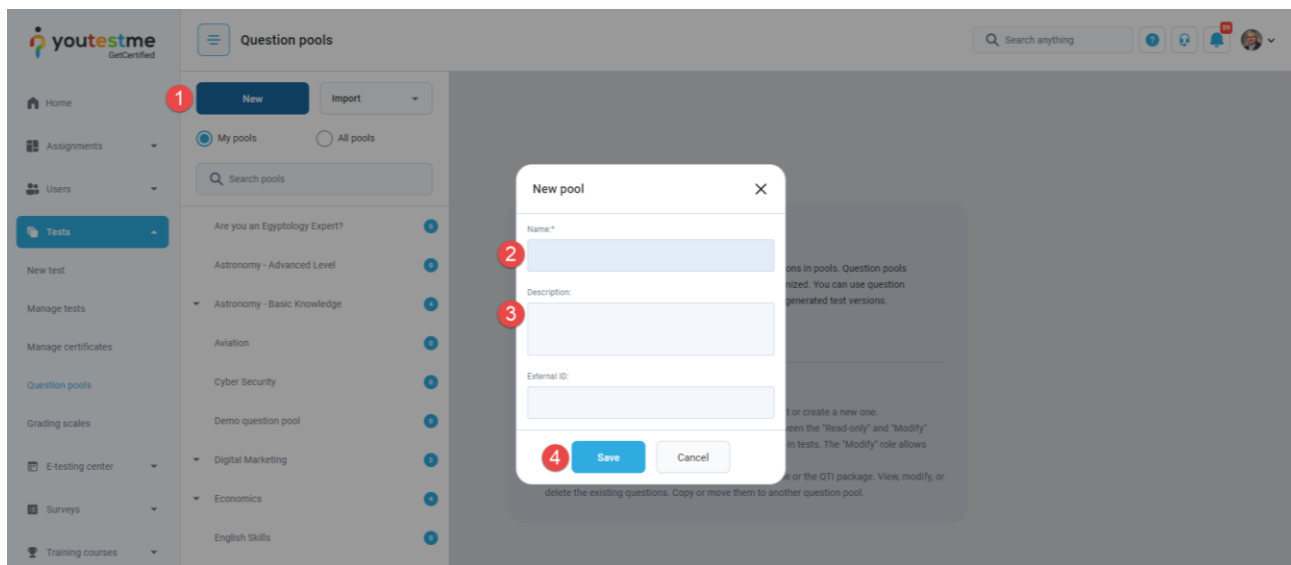
To access a question pool page:

1. Click the “Tests” option in the left side menu.
2. Select “Question pools”.



To create a question pool:

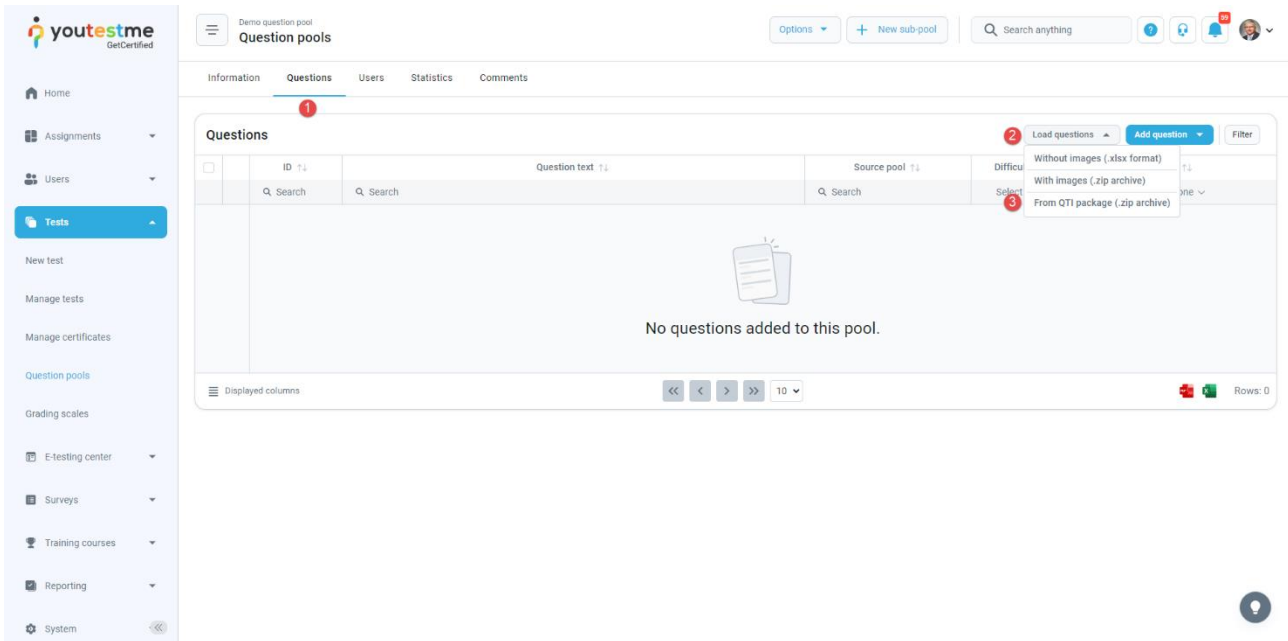
1. Select the “New” button.
2. Enter the name of the pool.
3. Optionally, enter the description.
4. Click on the “Save” button.



3 Importing questions using the QTI import

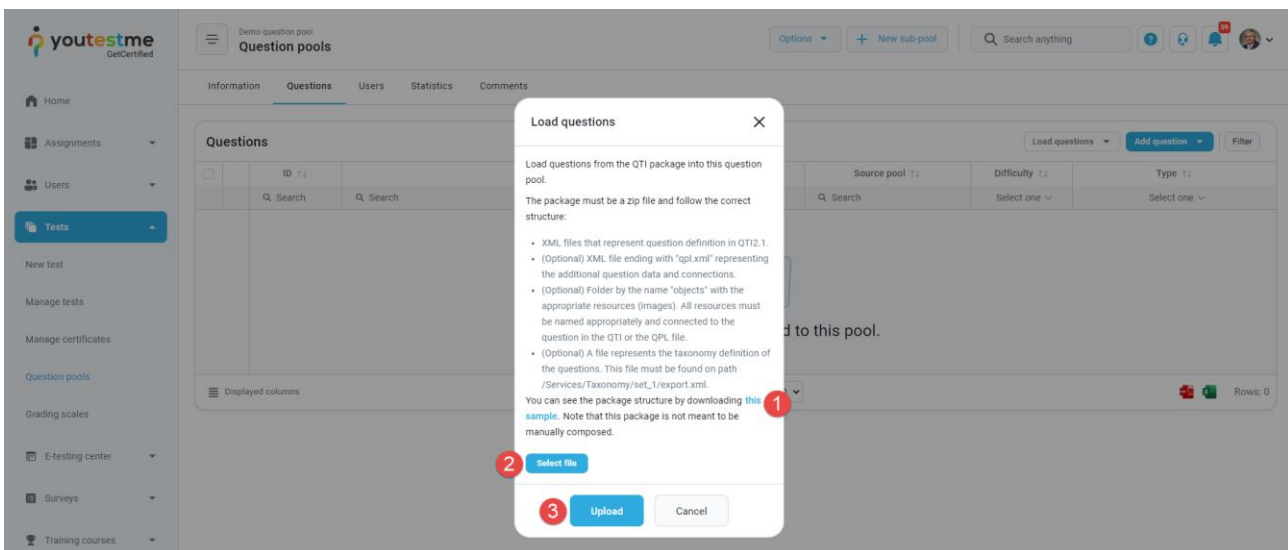
To import questions using the QTI importer:

1. Navigate to the “**Questions**” tab.
2. Select the “**Load questions**” drop-down list.
3. Select the “**From QTI package (.zip archive)**” option.



In the pop-up window:

1. Download a sample zip file.
2. Click the “**Select file**” button and select the file from your local system.
3. Click the “**Upload**” button.



4 Confirmation that the requirement is met

By clicking the “**Show log**” button, a new window will appear with the information about the process of importing the questions using the QTI import.

