

Requirement	Possibility to mark questions during the test and be able to review them in the test report
Author	YouTestMe
Confidentiality	Public
Last save date	Thursday, July-28-2022 at 1:55:00 PM

Table of Contents

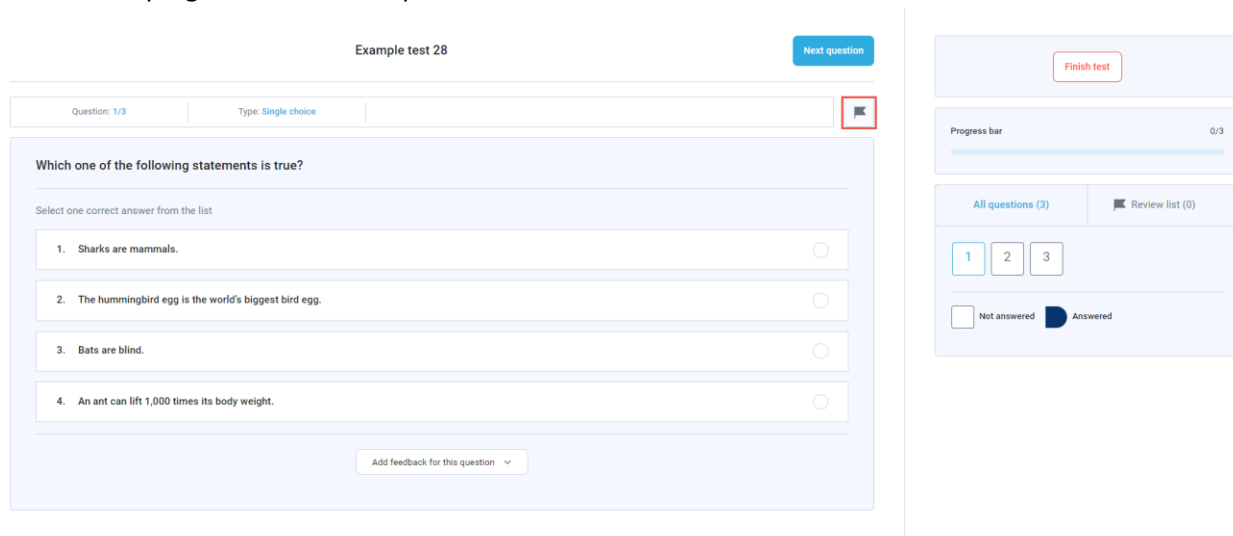
1	Introduction	1
2	Candidates perspective	1
3	Administrator’s perspective	2

1 Introduction

This article explains how a candidate can mark a question for additional review during the test-taking process and how those questions are displayed in the candidate’s report for the administrator or candidate’s review.

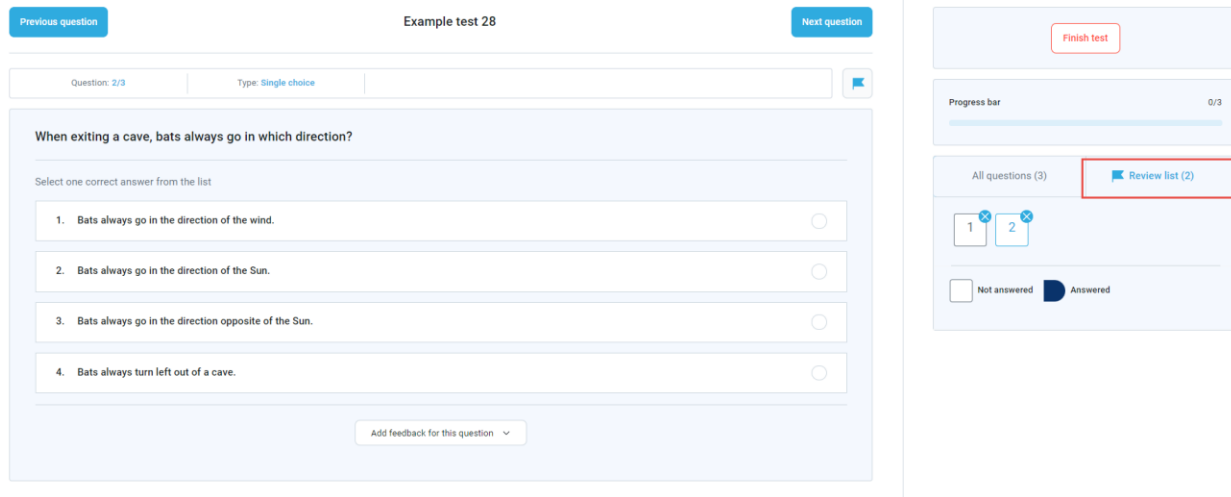
2 Candidate’s perspective

Once the candidates enter the test, they can mark any question for further review by clicking on the flag icon on the top right corner of the question.

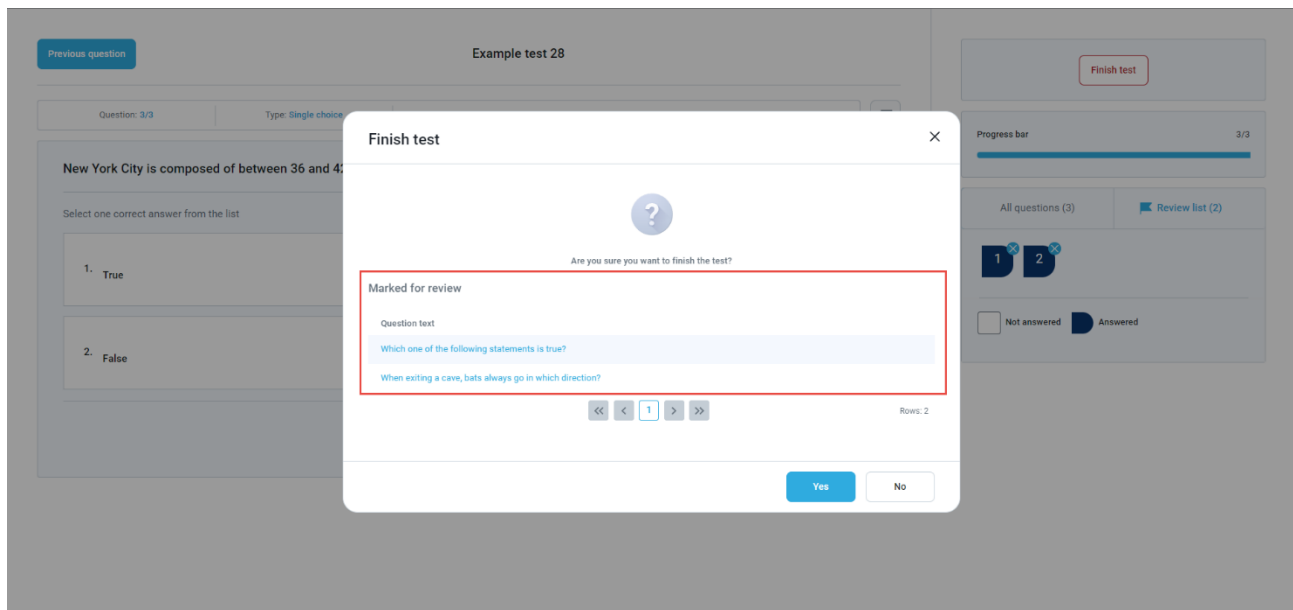


The screenshot displays a test interface for 'Example test 28'. The main area shows a question: 'Which one of the following statements is true?' with four options: 'Sharks are mammals.', 'The hummingbird egg is the world's biggest bird egg.', 'Bats are blind.', and 'An ant can lift 1,000 times its body weight.' A flag icon is visible in the top right corner of the question area. The sidebar on the right includes a 'Finish test' button, a progress bar showing '0/3', and a 'Review list (0)' section with buttons for 'All questions (3)', '1', '2', and '3'. A legend at the bottom of the sidebar indicates 'Not answered' (white square) and 'Answered' (blue square).

At any moment before finishing the test, candidates can see their list of questions for review on the right panel.



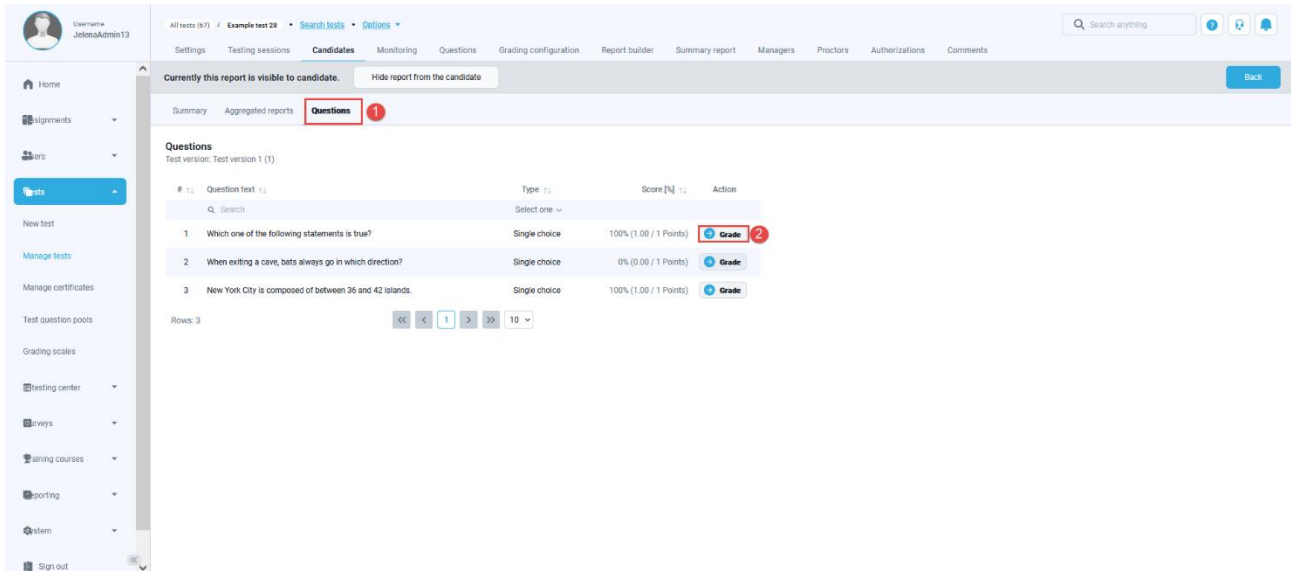
After clicking on the “**Finish test**” button, candidates will be reminded again about the questions they marked for review.



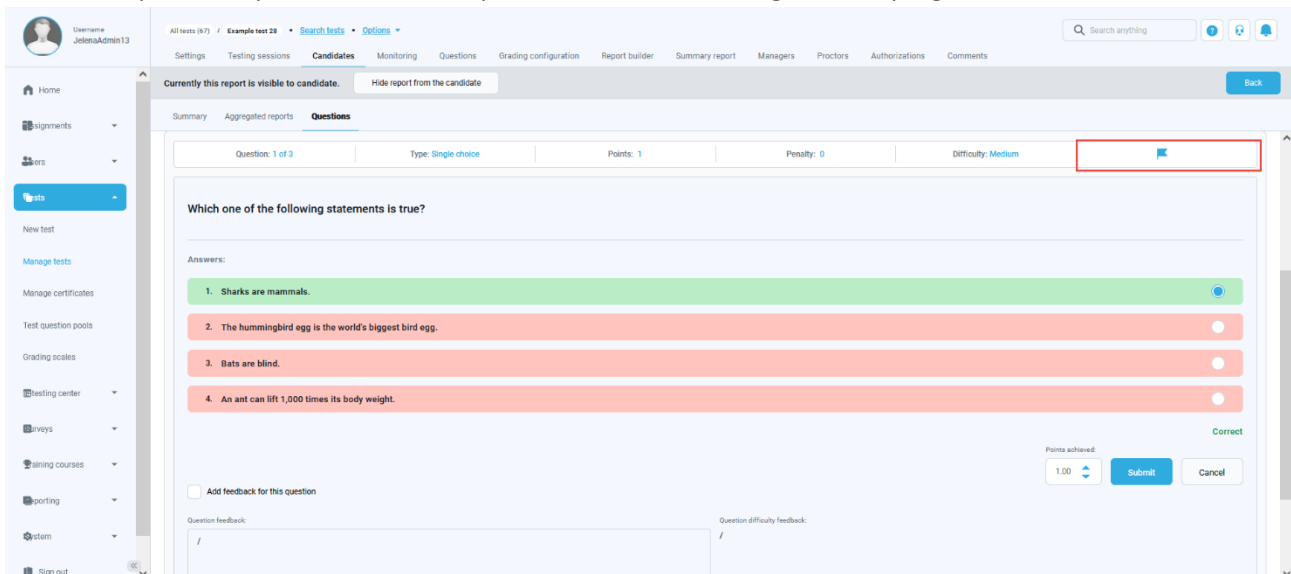
3 Administrator’s perspective

After the candidate has finished the test, an administrator can open the personal report from the “**Candidates**” tab. In the persona report:

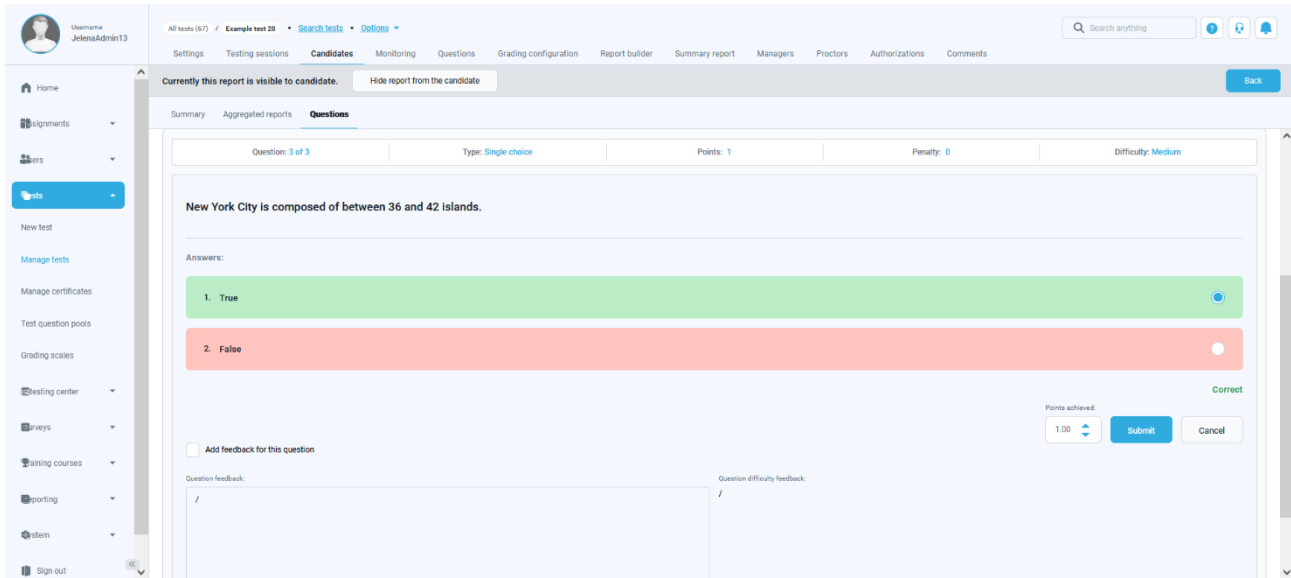
1. Click on the “**Questions**” tab.
2. Click on the “**Grade**” button next to the desired question.



When the question opens, the marked question will have the flag in the top right corner



The question which is not marked will be displayed without the flag, as shown below:



The screenshot displays the Youtestme user interface for reviewing a question. At the top, the user is identified as 'User: JelenAdmin13'. The main navigation bar includes 'All tests (97)', 'Example test 28', 'Search tests', and 'Dobos'. A search bar and notification icons are on the right. Below this, a secondary navigation bar lists 'Settings', 'Testing sessions', 'Candidates', 'Monitoring', 'Questions', 'Grading configuration', 'Report builder', 'Summary report', 'Managers', 'Proctors', 'Authorizations', and 'Comments'. The 'Candidates' section is active, showing 'Currently this report is visible to candidate.' and a 'Hide report from the candidate' button. A 'Back' button is also present.

The main content area shows a question card for 'Question: 3 of 3'. The question text is 'New York City is composed of between 36 and 42 islands.' The card displays 'Type: Single choice', 'Points: 1', 'Penalty: 0', and 'Difficulty: Medium'. Under 'Answers:', there are two options: '1. True' (selected with a radio button) and '2. False'. A 'Correct' label is visible on the right. Below the answers, there is a 'Points achieved:' section showing '1.00' and 'Submit' and 'Cancel' buttons. At the bottom, there are two text input fields for 'Question feedback:' and 'Question difficulty feedback:'.