



YouTestMe

QTI Package Import - opportunity to select the questions
that will be imported

File name	QTI Package Import - opportunity to select the questions that will be imported
Author	YouTestMe
Confidentiality	Internal or Public
Last save date	Monday, August-01-2022 at 11:24:00 AM

Table of Contents

1	Introduction.....	2
2	Creating a pool.....	3
3	Importing questions using the QTI import.....	4
4	Confirmation that the requirement is met.....	5

1 Introduction

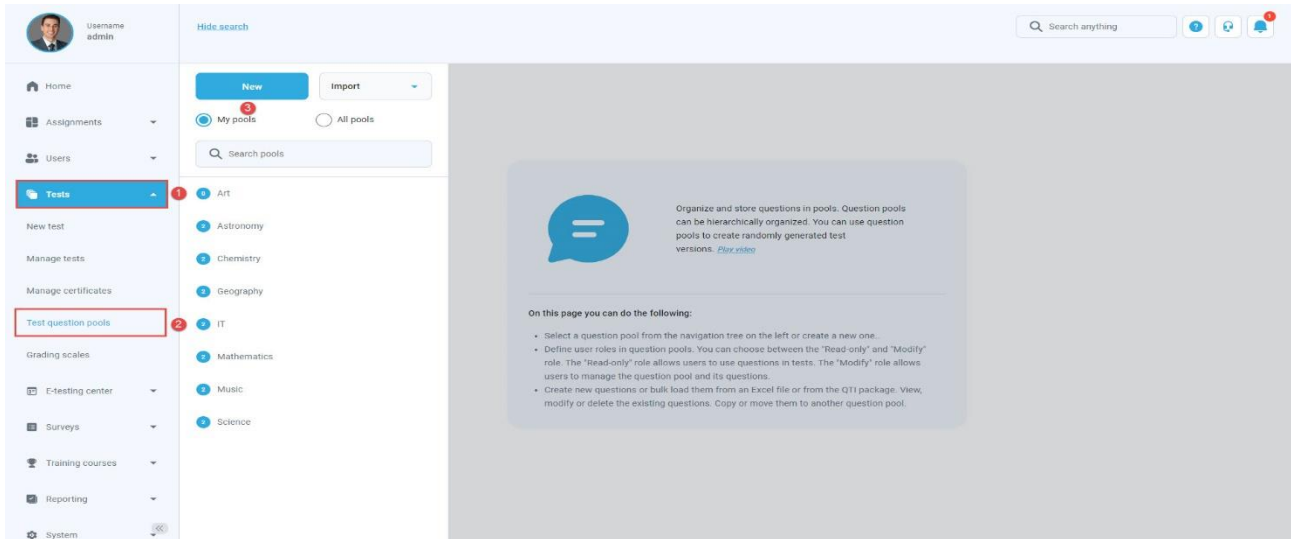
This article explains how to confirm if the following requirement is well implemented:

- **After reading and parsing the QTI file, the user should be presented with all the questions contained therein and then given the opportunity to select the questions that are to be imported.**

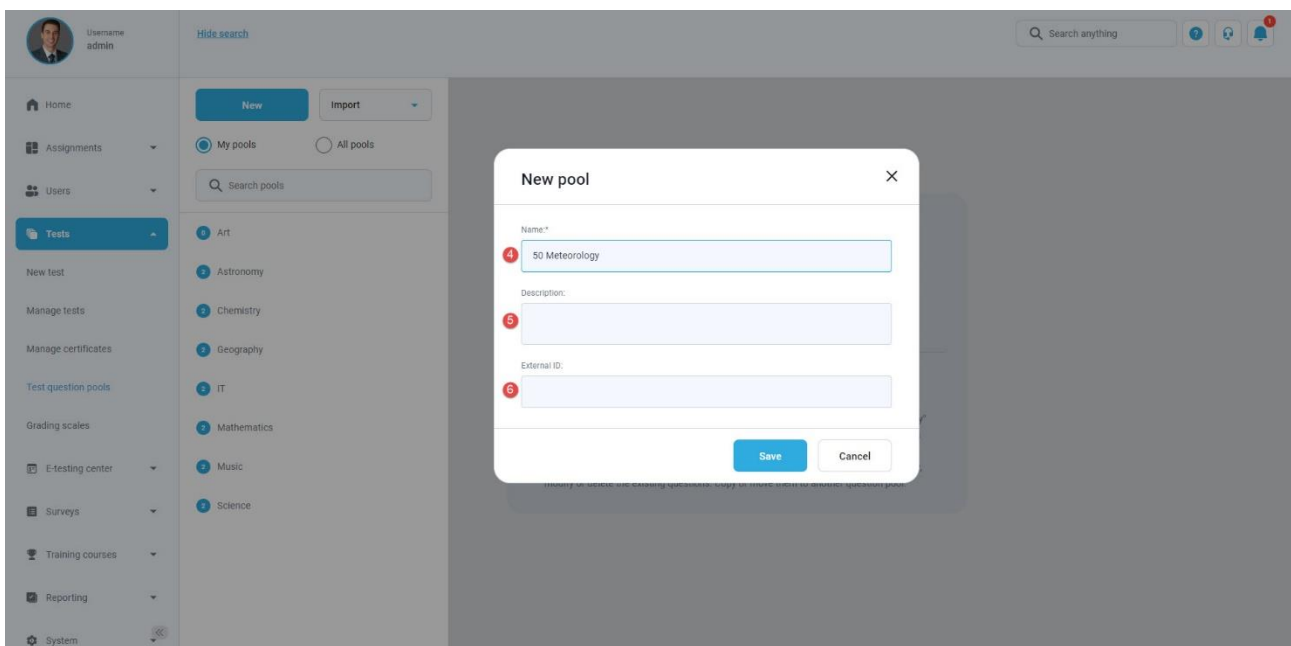
2 Creating a pool

To create a question pool:

1. Navigate to the “Tests” tab in the left side menu.
2. Select the “Test question pools” tab.
3. Click on the “New” button.

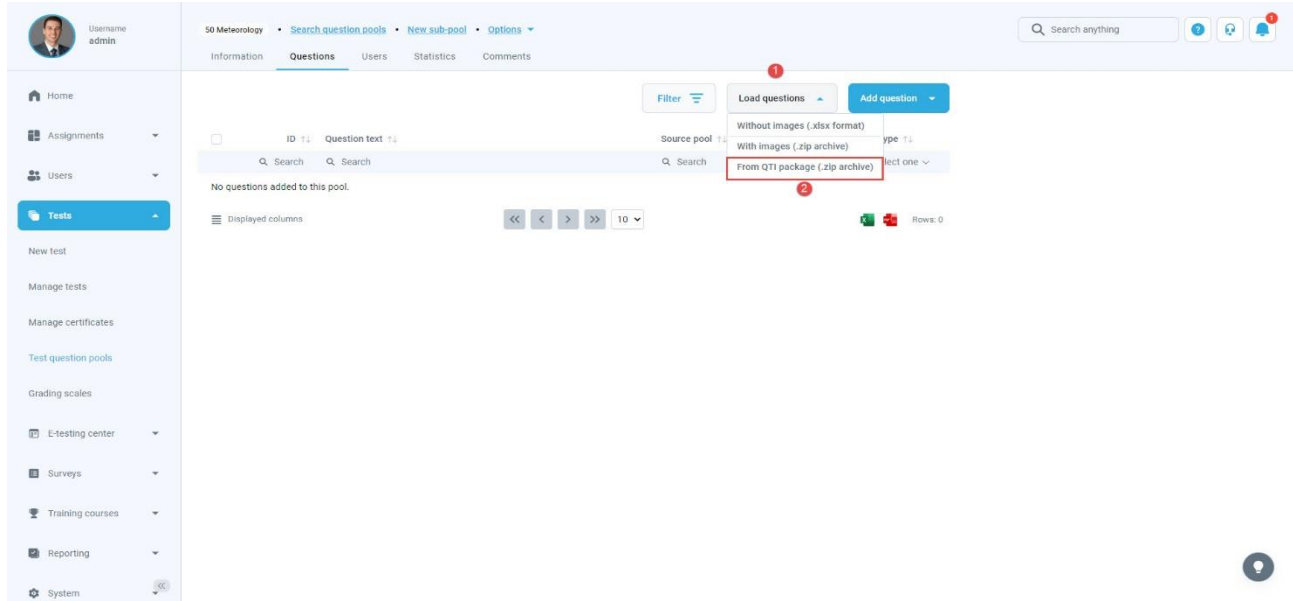


4. Enter the name of the question pool.
5. Optionally, enter a description.
6. Optionally, enter the External ID.

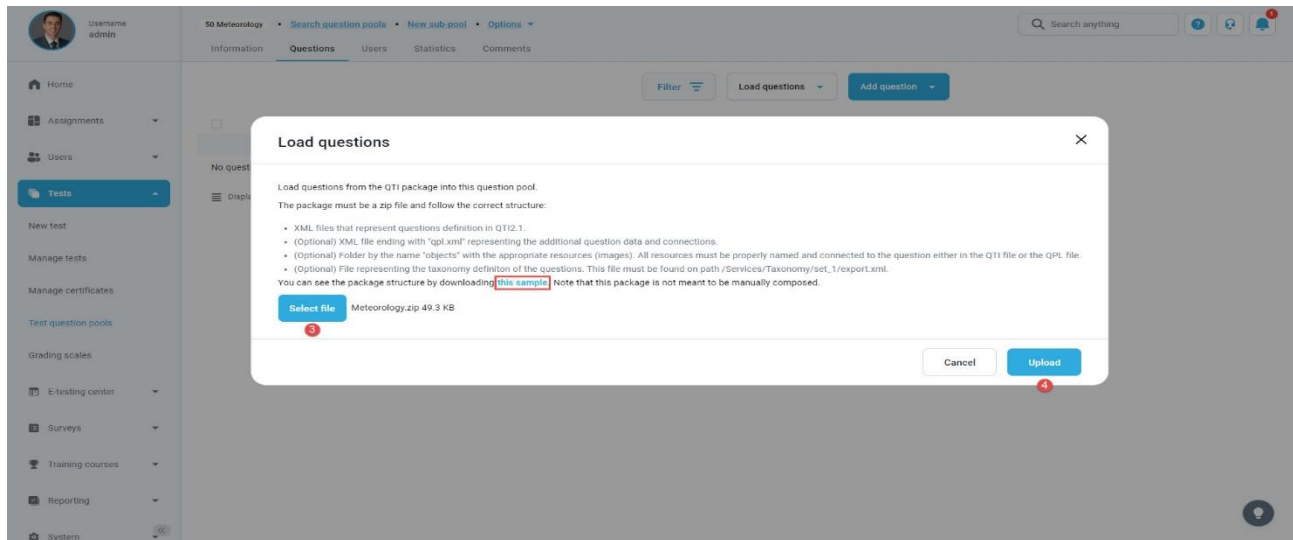


3 Importing questions using the QTI import

1. Click on the “Load questions” dropdown menu.
2. Select the “From QTI package (.zip archive)”.



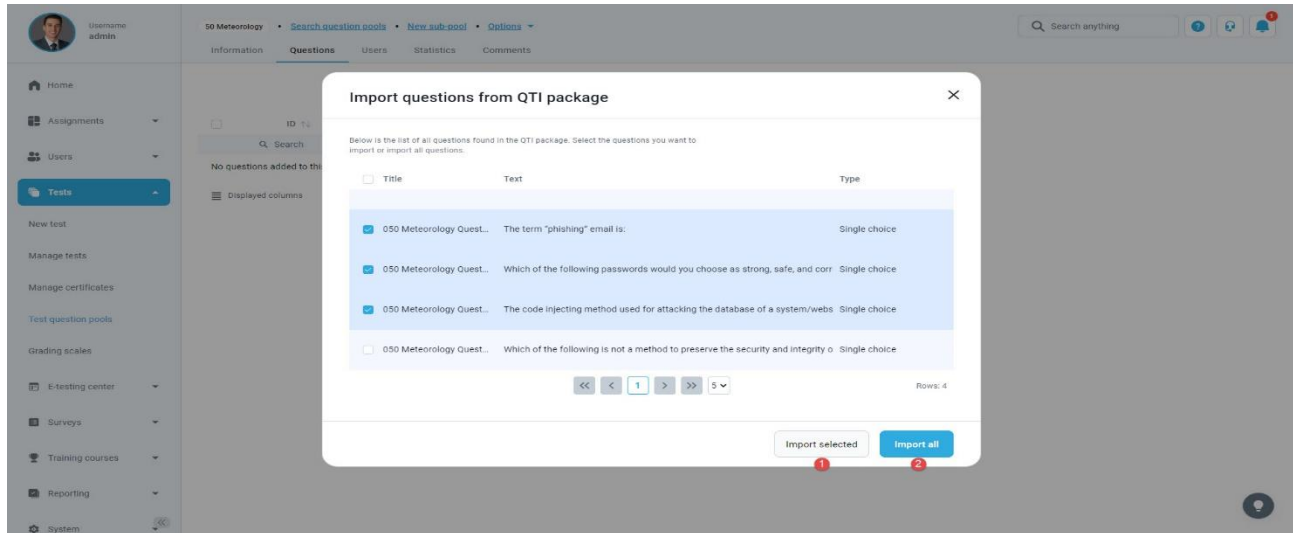
3. Click on the “Select file”, and add the desired one from your local system.
4. Click on the “Upload” button.



4 Confirmation that the requirement is met

After clicking on the “**Upload**” button, the new pop-up window will appear where you can manually select questions that will be uploaded into the pool. You can:

1. Import selected questions.
2. Import all questions.



Once click the button, the questions will be imported to the pool.