



# YouTestMe

A field for the student to write down feedback  
on a specific question and the possibility of determining  
question difficulty

<b>File name</b>	Question feedback and difficulty
<b>Author</b>	YouTestMe
<b>Confidentiality</b>	Public
<b>Last save date</b>	Friday, August-19-2022 at 12:22:00 PM

## Table of Contents

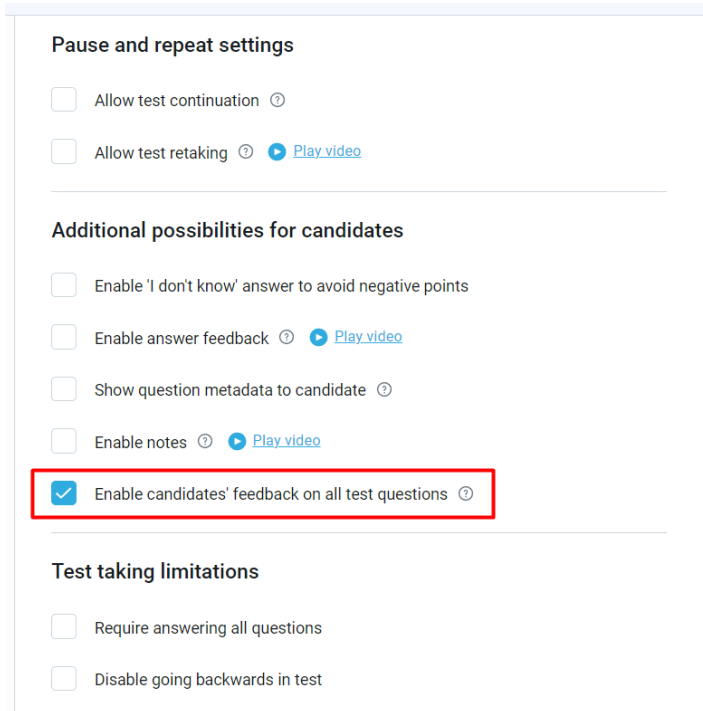
1	Introduction.....	2
2	Configuring a test.....	3
3	Accessing the test .....	4
4	Adding feedback and determining the question’s difficulty .....	4
5	Confirmation that the requirement is met.....	6

### 1 Introduction

This article explains how to allow candidates to add question feedback during the test-taking and how the student can write down feedback on a specific question and determine the question’s difficulty.

## 2 Configuring a test

To allow candidates to add question feedback during the test-taking you should check the “**Enable candidates' feedback on all test questions**” option in the test creation wizard.



**Pause and repeat settings**

- Allow test continuation ⓘ
- Allow test retaking ⓘ [Play video](#)

---

**Additional possibilities for candidates**

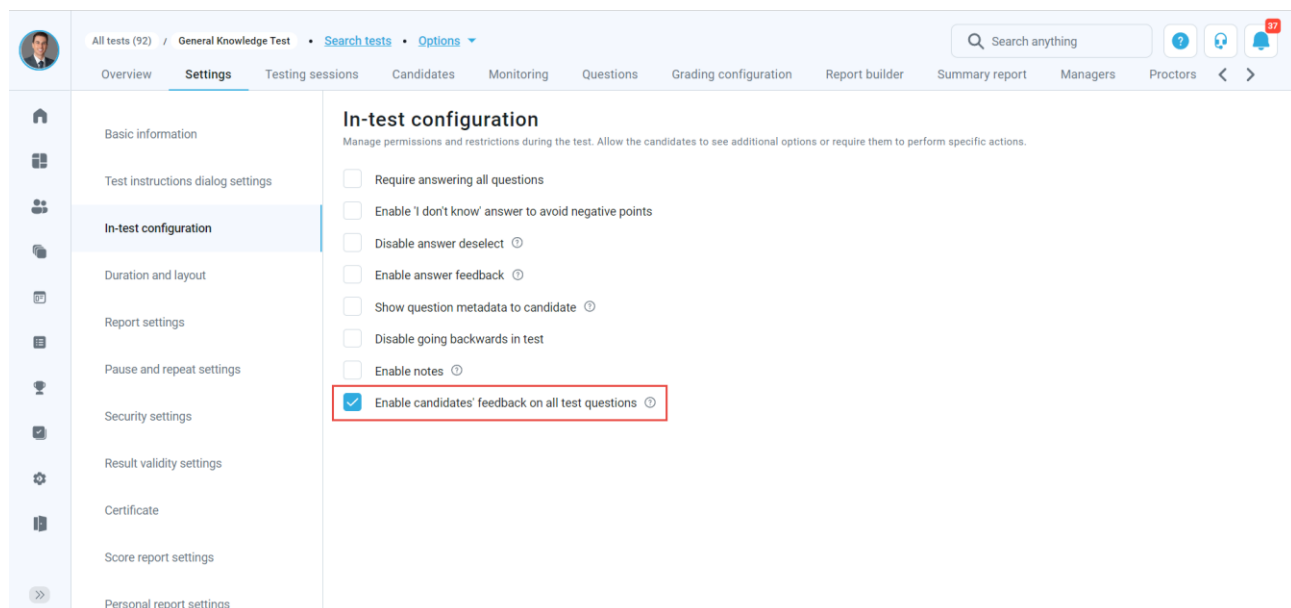
- Enable 'I don't know' answer to avoid negative points
- Enable answer feedback ⓘ [Play video](#)
- Show question metadata to candidate ⓘ
- Enable notes ⓘ [Play video](#)
- Enable candidates' feedback on all test questions ⓘ**

---

**Test taking limitations**

- Require answering all questions
- Disable going backwards in test

Note that you can enable this option for already created tests under the “**In-test configuration**” tab.



All tests (92) / General Knowledge Test • Search tests • Options ▾

Search anything

Overview **Settings** Testing sessions Candidates Monitoring Questions Grading configuration Report builder Summary report Managers Proctors < >

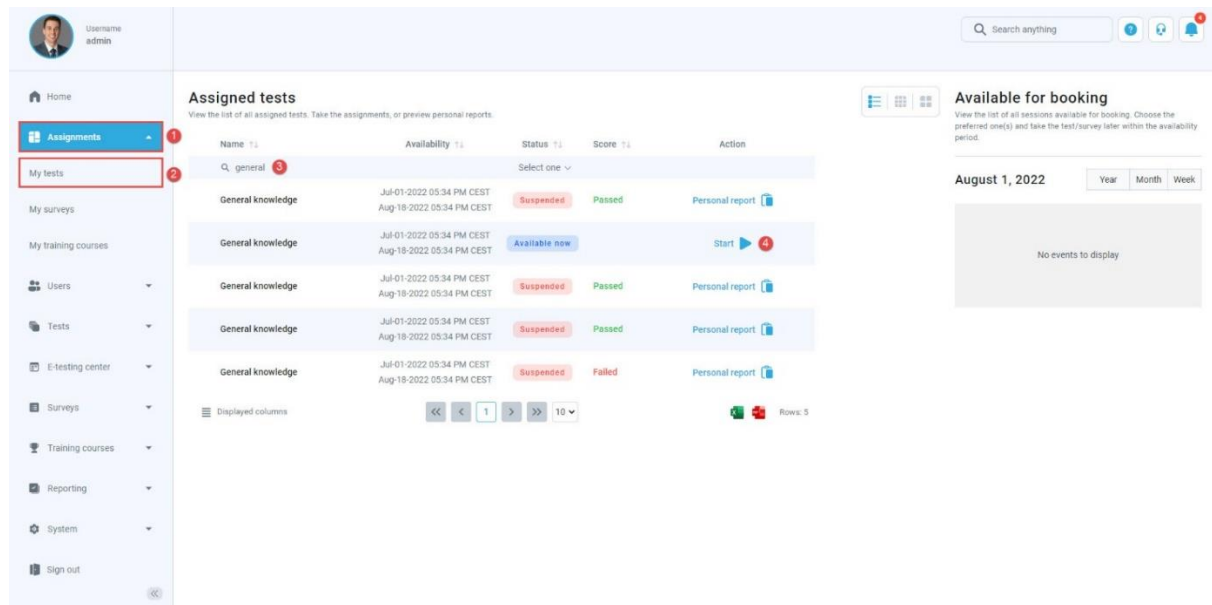
**In-test configuration**  
Manage permissions and restrictions during the test. Allow the candidates to see additional options or require them to perform specific actions.

- Require answering all questions
- Enable 'I don't know' answer to avoid negative points
- Disable answer deselect ⓘ
- Enable answer feedback ⓘ
- Show question metadata to candidate ⓘ
- Disable going backwards in test
- Enable notes ⓘ
- Enable candidates' feedback on all test questions ⓘ**

### 3 Accessing the test

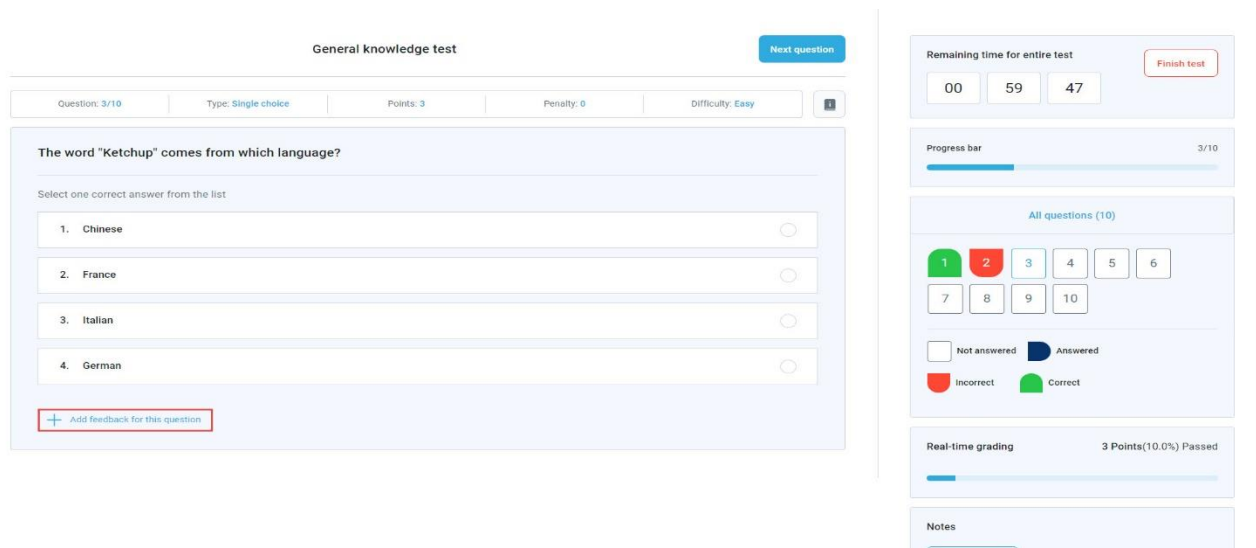
To write down the feedback for the questions and determine the question difficulty:

1. Click the **“Assignments”** tab in the main menu.
2. Select the **“My tests”** option.
3. Search for the desired test.
4. Click on the **“Start”** button.

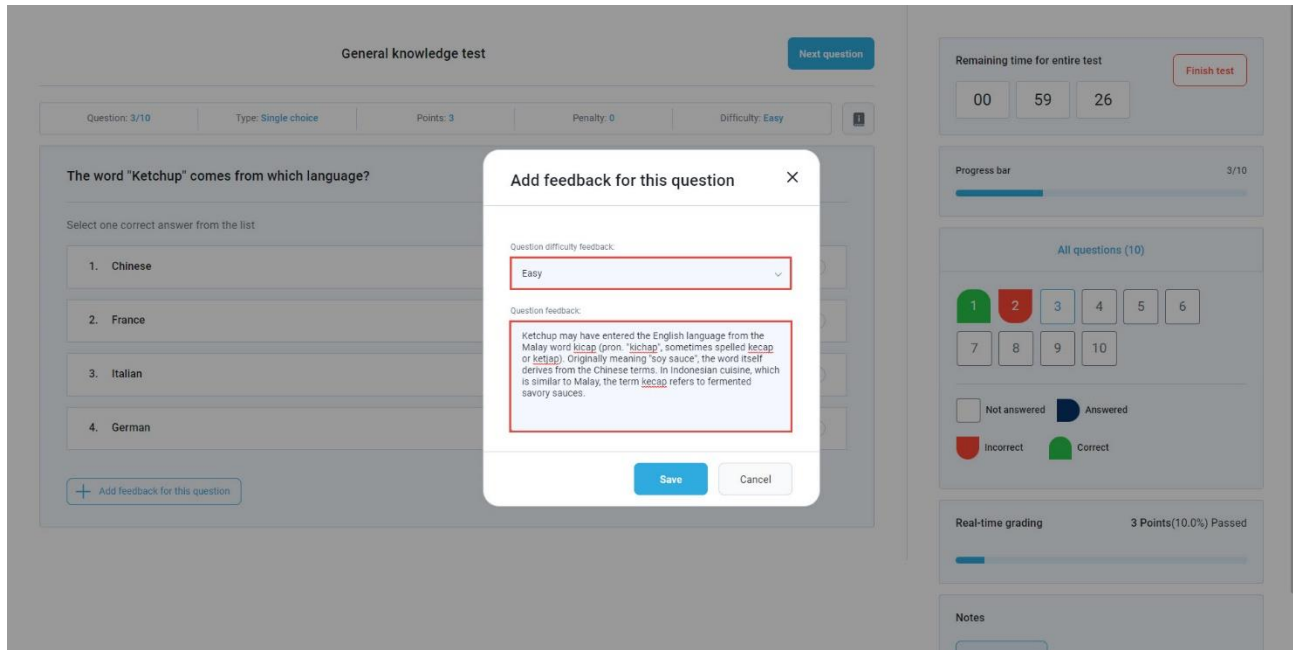


### 4 Adding feedback and determining the question’s difficulty

Below each question in the test is a button **“Add feedback to this question”**.



By clicking on that button, a new dialog will appear where the user can insert their feedback and determine the question's difficulty.



**Note:** The candidate can mark a question as hard, medium, or easy.

## 5 Confirmation that the requirement is met

To see the inserted feedback:

1. Navigate to the “**Questions**” tab.
2. Scroll to the question that has feedback.
3. Click on the “**Show candidates feedback**” button.

The screenshot shows the 'Questions' tab in the Youtestme interface. On the left, a sidebar lists navigation options like Home, Assignments, Users, Tests, etc. The main area displays a congratulatory message for 'Jack Smith' who passed a 'General knowledge test' with a score of 60.0%. The question being viewed is 'Question 3 of 10', a 'Single choice' question worth 3 points, with a difficulty of 'Easy'. The question text is 'The word "Ketchup" comes from which language?'. The answer options are: 1. Italian, 2. Chinese (selected), 3. France, and 4. German. The system indicates 'Points achieved: 3.00' and 'Correct'. A 'Show candidates feedback' dropdown menu is visible, and a red circle with the number '3' is shown below it, indicating that feedback is available for this question.

In the personal report, the user’s feedback and the question’s difficulty are displayed as in the picture below:

This screenshot shows the same question report as above, but with the 'Show candidates feedback' button changed to 'Hide candidates feedback'. Below the question options, a 'Question difficulty feedback' section is expanded, showing the following text:   
**Easy**  
 Question feedback:  
 Ketchup may have entered the English language from the Malay word kicap (pron. 'kitchap', sometimes spelled kecap or ketjap). Originally meaning 'soy sauce', the word itself derives from the Chinese terms. In Indonesian cuisine, which is similar to Malay, the term kecap refers to fermented savory sauces.